



International Conference

**Culture and
Architecture as
Drivers for Rural
Development**

8 - 10 November 2018
Songyang County, China

Aedes Architecture Forum



Shimen Bridge, Shimen Village. Photo: Han Dan.

Regions on the Rise: Culture and Architecture as Drivers for Rural Development

International Conference in Songyang, China

November 8–10, 2018

www.regionsontherise.org

Rethinking strategies for rural development is a critical global issue today. Dynamic urbanization processes shape large areas of the world, while the revitalization of rural regions has been neglected for a long time. This has consequently given rise to pressing socio-economic and political challenges all over the world. To stimulate an international discussion, Aedes Architecture Forum and Network Campus Berlin initiated the conference Regions on the Rise. Culture and Architecture as Drivers for Rural Development.

The conference will focus on the duality and interrelations between the urban and the rural, seeking to explore what culture and architecture can contribute to rural renewal in interplay with economy, spatial planning, infrastructure, and ecology. The goal of this international knowledge exchange of holistic strategies and best practice examples is to discuss new concepts, which might ultimately establish a new rural confidence and

identity as well as economic progress and reliability as major incentives to make people stay in or even return to the “hinterland.” Against this backdrop, the conference is structured around three main sessions complemented by excursions into the region to illustrate the topic and to offer opportunities for exchange: (I) a cluster of ten impulse statements to boost the conference with a wide range of positions by stakeholders from the various fields of practice and research in the rural context, as well as panel discussions on (II) “Culture + Architecture” and (III) “Ecology and Economy + Architecture.”

Background

The conference is part of the long-term international inquiry program *Regions on the Rise* by Aedes Network Campus Berlin. In various formats and places it brings together policymakers, architects, planners, researchers, economists, curators and related professionals to share and archive experiences, strategies and new ideas for the development of the “global rural region” of the future.

The Songyang conference in November was born out of the very successful Aedes exhibition *Rural Moves – The Songyang Story* recently presented in Berlin and currently on show in the official program of the 16th Venice Architecture Biennale. The exhibition displays a series of carefully balanced architectural “acupuncture” in Songyang—a region in the southwest of Shanghai that became a pioneer in the sensitive redevelopment of rural areas. They were implemented by the committed Beijing-based architect Xu Tiantian in close collaboration with Songyang’s magistrate and locals.

Confirmed lecturers

Distinguished protagonists from many regions of the world and from China promise an intense, controversial, and multi-layered dialogue.

Hitoshi Abe Professor, Department of Architecture and Urban Design, UCLA, Los Angeles, USA; Principal, Atelier Hitoshi Abe, Sendai, Japan

Lina Annab Minister of Tourism and Antiquities, Amman, Jordan

Aric Chen Curator-at-large, M+, Hong Kong

Hans-Jürgen Commerell Director, Aedes Network Campus Berlin and Architecture Forum, Germany

Nuria Costa Mexican Women's Network, Civic Society, Morelos, Mexico

Farrokh Derakhshani Director, Aga Khan Award for Architecture, Geneva, Switzerland

Kristin Feireiss Director, Aedes Architecture Forum and Network Campus Berlin, Germany

Angel Luis Fernandez Head of Research Center for Urban Design, ESNE. School of Design, Innovation and Technology, Madrid, Spain

Angelika Fitz Director, Austrian Architecture Museum, Vienna, Austria

Huang Yung Sung Art Director, Han Sheng Magazine, Taiwan

Adrian Iredale Director, Iredale Pedersen Hook Architects, Perth, Australia

Erhard An-He Kinzelbach Professor, Founder KNOWSPACE, Berlin, Germany

Eduard Kögel Architecture Historian, Berlin, Germany

Li Xiangning Professor, Tongji University, Curator Chinese Pavilion at the Venice Biennale 2018, Shanghai, China

Liu Shouying Economist, China

Juan Mayr Maldonado National Commission for Conciliation, Bogotá, Colombia

Miriam Mlecek Researcher, formerly Leibniz University Hanover; Programme Manager Aedes Network Campus Berlin, Germany

Andreas Ruby Director, S AM Swiss Architecture Museum, Basel, Switzerland

Remy Sietchiping Leader, Regional and Metropolitan Planning, UN-Habitat, Nairobi, Kenya

Wang Jun Magistrate Songyang County, China

Xu Tiantian Architect, Beijing, China

Zhang Ke Founding Principal, ZAO/standardarchitecture, Beijing, China; Harvard University Graduate School of Design, Cambridge, USA

Zhang Lei Professor, Founder & Chief Architect, Nanjing University; AZL architects, Nanjing, China

Zhang Yue Professor, Tsinghua University, Beijing, China

Zhu Jingxiang Professor, Hong Kong University, China

Confirmed front-row peers

Maria Auböck Guest Professor, Academy of Fine Arts Vienna, Austria

Winka Dubbeldam Assoc. AIA, Miller Professor and Chair, Department of Architecture, University of Pennsylvania, Philadelphia, USA

Kerstin Faber Project Manager, IBA Thüringen, Apolda, Germany

Julio Gaeta Dean ISAD. Institute of Architecture and Design, Chihuahua, Mexico

Nadine Godehardt Deputy Head of Research Division Asia, German Institute for International and Security Affairs (SWP), Berlin, Germany

Annette Heimann Managing Director, Asia-Pacific-Forum, Berlin, Germany

Katja Hellkötter Founder/Director, Constellations International GmbH; Curator, Citymakers Germany-China, Berlin/Shanghai, Germany/China

János Kárász Co-Founder, Auböck + Kárász, Landscape Architects, Vienna, Austria

Hubert Klumpner Co-Director, Urban-Think Tank; Professor for Architecture, ETH Zurich, Switzerland

Hannes Langguth Researcher and Doctoral Candidate, Habitat Unit, Chair of International Urbanism and Design, TU Berlin, Germany

Luby Springall Principal, Gaeta Springall Arquitectos, Mexico

Eva Sternfeld Science Advisor, German-Sino Agricultural Center (DCZ), Beijing, China

Christoph Stroschein Managing Director, GESI Deutsche Gesellschaft für Systeminnovation mbH, Berlin, Germany

Participation in the conference

The conference is open to the public. Participation is free of charge and includes guided excursions, transfer shuttle from the nearest airports, and meals. Participants have to cover their own flight and accommodation costs. Only a limited number of seats is available to the public. Registration deadline: October 8, 2018.

Detailed information on the conference program and on how to register can be found [here](#).

Additional information

Conference proceedings

The contributions and results of the conference will be compiled in a publication and in the Aedes online archive to deepen and expand the international discussion on the redevelopment of rural regions and to make the content accessible for those not able to follow the event in person.

Host: CPC Songyang County Committee, Songyang County People's Government

Conceptualized by: Aedes Architecture Forum & Network Campus Berlin

Rural Moves and Songyang as Case Study

Aedes is invited to present the exhibition *Rural Moves – The Songyang Story* at this year's **Frankfurt Book Fair** from October 10-14, 2018.

In 2019, an updated version of the exhibition will be shown at:

Austrian Architecture Museum, Vienna (Az W), March 14-April 23, 2019

S AM Swiss Architecture Museum, Basel, September 28-November 10, 2019

For further information please contact:

Dunya Bouchi, Aedes Architecture Forum

Christinenstr. 18-19, 10119 Berlin

T +49 30 282 70 15 / [db \[at\] ancb.de](mailto:db@ancb.de)

Aedes





AEDES ARCHITECTURE FORUM – E

Europe

Regions on the Rise: Culture and **Architecture** as Drivers for Rural Development

International **Conference** in **Songyang, China**

November 8–10, 2018

www.regionsontherise.org

Rethinking strategies for rural development is a critical global issue today. Dynamic urbanization processes shape large areas of the world, while the revitalization of rural regions has been neglected for a long time. This has consequently given rise to pressing socio-economic and political challenges all over the world. To stimulate an international discussion, Aedes **Architecture** Forum and Network Campus **Berlin** initiated the **conference** Regions on the Rise. Culture and **Architecture** as Drivers for Rural Development.

The **conference** will focus on the duality and interrelations between the urban and the rural, seeking to explore what culture and **architecture** can contribute to rural renewal in interplay with economy, spatial planning, infrastructure, and ecology. The goal of this international knowledge exchange of holistic strategies and best practice examples is to discuss **new** concepts, which might ultimately establish a **new** rural confidence and identity as well as economic progress and reliability as major incentives to make people stay in or even return to the "hinterland." Against this backdrop, the **conference** is structured around three main sessions complemented by excursions into the region to illustrate the topic and to offer opportunities for exchange: (I) a cluster of ten impulse statements to boost the **conference** with a wide range of positions by stakeholders from the various fields of practice and research in the rural context, as well as panel discussions on (II) "Culture + **Architecture**" and (III) "Ecology and Economy + **Architecture**."

Background

The [conference](#) is part of the long-term international inquiry program [Regions on the Rise](#) by Aedes Network Campus [Berlin](#). In various formats and places it brings together policymakers, architects, planners, researchers, economists, curators and related professionals to and archive experiences, strategies and [new](#) ideas for the development of the “global rural region” of the future.

The [Songyang conference](#) in November was born out of the very successful Aedes exhibition [Rural Moves – The Songyang Story](#) recently presented in [Berlin](#) and currently on show in the official program of the 16th [Venice Architecture Biennale](#). The exhibition displays a series of carefully balanced architectural “acupuncture” in [Songyang](#)—a region in the southwest of Shanghai that became a pioneer in the sensitive redevelopment of rural areas. They were implemented by the committed Beijing-based architect Xu Tiantian in close collaboration with [Songyang’s](#) magistrate and locals.

Confirmed lecturers

Distinguished protagonists from many regions of the world and from [China](#) promise an intense, controversial, and multi-layered dialogue.

Hitoshi Abe Professor, Department of [Architecture](#) and Urban Design, UCLA, Los Angeles, USA; Principal, Atelier Hitoshi Abe, Sendai, Japan

Lina Annab Minister of Tourism and Antiquities, Amman, Jordan

Aric Chen Curator-at-large, M+, Hong Kong

Hans-Jürgen Commerell Director, Aedes Network Campus [Berlin](#) and [Architecture Forum](#), [Germany](#)

Nuria Costa Mexican Women’s Network, Civic Society, Morelos, Mexico

Farrokh Derakhshani Director, Aga Khan Award for [Architecture](#), Geneva, Switzerland

Kristin Feireiss Director, Aedes [Architecture Forum](#) and Network Campus [Berlin](#), [Germany](#)

Angel Luis Fernandez Head of Research Center for Urban Design, ESNE. [School of Design, Innovation and Technology](#), [Madrid, Spain](#)

Angelika Fitz Director, Austrian [Architecture Museum](#), Vienna, Austria

Huang Yung Sung Art Director, Han Sheng Magazine, Taiwan

Adrian Iredale Director, Iredale Pedersen Hook Architects, Perth, Australia

Erhard An-He Kinzelbach Professor, Founder KNOWSPACE, [Berlin, Germany](#)

Eduard Kögel [Architecture Historian](#), [Berlin, Germany](#)

Li Xiangning Professor, Tongji University, Curator Chinese Pavilion at the [Venice Biennale 2018](#), Shanghai, [China](#)

Liu Shouying Economist, [China](#)

Juan Mayr Maldonado National Commission for Conciliation, Bogotá, Colombia

Miriam Mlecek Researcher, formerly Leibniz University Hanover; Programme Manager Aedes Network Campus [Berlin](#), [Germany](#)

Andreas Ruby Director, S AM Swiss [Architecture Museum](#), Basel, Switzerland

Remy Sietchiping Leader, Regional and Metropolitan Planning, UN-Habitat, Nairobi, Kenya

Wang Jun Magistrate [Songyang County](#), [China](#)

Xu Tiantian Architect, Beijing, [China](#)

Zhang Ke Founding Principal, ZAO/standardarchitecture, Beijing, [China](#); Harvard University Graduate [School of Design](#), Cambridge, USA

Zhang Lei Professor, Founder Chief Architect, Nanjing University; AZL architects, Nanjing, [China](#)

Zhang Yue Professor, Tsinghua University, Beijing, [China](#)

Zhu Jingxiang Professor, Hong Kong University, [China](#)

Confirmed front-row peers

Maria Auböck Guest Professor, Academy of Fine Arts Vienna, Austria
Winka Dubbeldam Assoc. AIA, Miller Professor and Chair, Department of [Architecture](#), University of Pennsylvania, Philadelphia, USA
Kerstin Faber Project Manager, IBA Thüringen, Apolda, [Germany](#)
Julio Gaeta Dean ISAD. Institute of [Architecture](#) and Design, Chihuahua, Mexico
Nadine Godehardt Deputy Head of Research Division [Asia](#), German Institute for International and Security Affairs (SWP), [Berlin, Germany](#)
Annette Heimann Managing Director, [Asia-Pacific-Forum](#), [Berlin, Germany](#)
Katja Hellkötter Founder/Director, Constellations International GmbH; Curator, Citymakers [Germany–China](#), [Berlin/Shanghai](#), [Germany/China](#)
János Kárász Co-Founder, Auböck + Kárász, Landscape Architects, Vienna, Austria
Hubert Klumpner Co-Director, Urban-Think Tank; Professor for [Architecture](#), ETH [Zurich](#), Switzerland
Hannes Langguth Researcher and Doctoral Candidate, Habitat Unit, Chair of International Urbanism and Design, TU [Berlin, Germany](#)
Luby Springall Principal, Gaeta Springall Arquitectos, Mexico
Eva Sternfeld Science Advisor, German-Sino Agricultural Center (DCZ), Beijing, [China](#)
Christoph Stroschein Managing Director, GESI Deutsche Gesellschaft für Systeminnovation mbH, [Berlin, Germany](#)

Participation in the conference

The [conference](#) is open to the public. Participation is free of charge and includes guided excursions, transfer shuttle from the nearest airports, and meals. Participants have to cover their own flight and accommodation costs. Only a limited number of seats is available to the public. Registration deadline: October 8, 2018.

Detailed information on the [conference](#) program and on how to register can be found [here](#).

Additional information

[Conference](#) proceedings

The contributions and results of the [conference](#) will be compiled in a publication and in the Aedes online archive to deepen and expand the international discussion on the redevelopment of rural regions and to make the content accessible for those not able to follow the event in person.

Host: CPC [Songyang](#) County Committee, [Songyang](#) County People's Government

Conceptualized by: Aedes [Architecture](#) Forum Network Campus [Berlin](#)

Rural Moves and [Songyang](#) as Case Study

Aedes is invited to present the exhibition Rural Moves – The [Songyang](#) Story at this year's Frankfurt Book Fair from October 10-14, 2018.

In 2019, an updated version of the exhibition will be shown at:

Austrian [Architecture Museum](#), Vienna (Az W), March 14-April 23, 2019

S AM Swiss [Architecture Museum](#), Basel, September 28-November 10, 2019

For further information please contact:

Dunya Bouchi, Aedes [Architecture](#) Forum

Christinenstr. 18-19, 10119 [Berlin](#)

T +49 30 282 70 15 / db [at] ancb.de

The 3rd Year of CITYMAKERS China – Germany Program, has started: Why again? What so far? And what to expect?

Katja Hellkötter, Founder of CONSTELLATIONS International, October 2018



Why?

Three insights led to the program's design in 2016. First, technological innovation needs to be **complemented by social innovation** and a **more holistic view** to sustainable development. Second, a large group of people who studied architecture, urbanism, and city planning between China and Germany are a potential leverage point for stronger Sino-German **people-to-people relations**. Third, **creativity, culture and diversity** are transversal design parameters whose power to generate impact is underestimated. Thus CITYMAKERS' mission was set: **to grow and enable a network of pioneering citymakers across disciplines who create novel models for livable cities.**

What was the outcome so far?

Stories of pioneers to share – Although neither mainstream, nor against the mainstream, there is a critical mass who are seeking **fresh approaches** that can **nudge the status-quo**. CITYMAKERS has scouted and recorded the stories of 70 plus inspiring citymakers.

Global innovation, local idea creation – Many challenges of urbanization are shared globally. In view of the urgent need for solutions, to source ideas globally in order to be contextualized at the local level can be a source of inspiration, and who knows, innovation. Our citymakers are inspired and supported **through enabling eco-systems that facilitate shared learning**. Check out the processes and tools for cities and citymakers that we compiled in the 2nd edition of the 2018 annual CITYMAKERS-Recommendations.

Growing new fields – In 2016, we embarked with the idea to cover thematic blind spots within Sino-German cooperation that we did not see highlighted by other players: Three topics had moved into focus in the 2nd year of the program: **Urban Farming, Future of Living, Cultural Memory**. For six months, three cross-cultural teams worked on joint project ideas. To witness how these ideas transformed into actions and continue to evolve until now – also after the Robert Bosch initial funding phase was over – is promising!

What to expect in the coming year?

New Blind spots to look at – While we will continue to explore the topics from the last round we will also look into some other themes. This is what is on our agenda for the coming year: **Urban Rural Interfaces** – here, we take the upcoming conference “Regions on the Rise” by ANCB- Aedes Metropolitan Laboratory in Songyang in mid-November as an impulse. **Healthy City** – looking at sub-topics ranging from food to biodiversity, to sport & exercise and animals in the city and last but not least **Kids in the City** – will be other gaps we want to fill. Beyond that, we will stay open for suggestions from the citymakers community. Let us know what you think is relevant!

Adding Value to Sister-City Relations – The assumption that a program like CITYMAKERS can add value to the cooperation framework of sister-cities between Germany and China – to date, there are 101 German municipalities with China partnerships! – was a rationale from the very beginning of the program concept. In 2018, we were happy to have been invited to make a CITYMAKERS-contribution to the “Dritter Runde Tisch China” organized by Engagement Global (SKEW - Service für Entwicklungsinitiativen). In **2019, Berlin and Beijing** will be **celebrating the 25th anniversary of their city partnership**. With support from the Senate Chancellery of the The Governing Mayor of Berlin and its Division for International Relations we started a **Berlin-Beijing Creative Cities Mapping**-project that will result into an attractive visual map by end of 2018 and is intended to pave the way for further joined actions in 2019.

Top-Down Bottom-Up Cooperation – In the 2018 CITYMAKERS-recommendations, we stated: multi-stakeholder cooperation and an **integrated strategy** for German actors from the third, private and public sectors are not only a potential for innovation but also a risk management measure for protecting and expanding spaces for bottom-up non-government citymakers. We are happy to have some individual citymakers who – thanks to travel grants from the Robert Bosch Foundation – will contribute to the upcoming **German Ministry of Environment endorsed conferences on cautious urban renewal and transition cities** hosted by NAX –

The Network for International Architecture Exchange of Federal Chamber of German Architects and ICLEI – Local Government for Sustainability in early November in Beijing.

CITYMAKERS-Ambassadors – We are also excited about a small yet powerful constellation of five individual professionals that have been nominated to join the above conferences: **The sustainable city system thinker:** Roman Mendle, ICLEI - Local Government for Sustainability, Smart Cities Program Manager and Builder of the “Urban Transition Alliance”; **The Cultural Heritage Urban Planning Advisor:** Ping Kong, Independent UNESCO Heritage Expert, Board Member of Institute of Heritage Studies at ICOMOS Germany; **The Municipal Green City Strategist:** Architect Sebastian Schlecht, from the Green Capital Europe Essen. **The city passionate start-up entrepreneur:** Jonas Schorr, Co-Founder of UrbanImpact from Berlin. The cultural architect and Sino-German space maker: Wang Keyao, Architect Founder of ZHISpace Xian, German Chancellor Scholarship Awardee (2017). And with this promise in mind: “If you align the interests and passions of a group of five – you can change the world!” we look forward to contributions that make a difference.

Sustainable businesses and scalable social impact – CITYMAKERS identified a number of good stories and practices that already exist. However, the hardest part still is: How to turn good ideas into really good plans and feasible and sustainable long-term models? Thus, this coming program year, we want to address this need more seriously. For late spring 2019 a **CITYMAKERS-Social Business Lab** is in the pipeline. Calls for applications will be out in January 2019!

Partnerships & ecosystem awareness – Seeking synergies with other actors in the field and **strategizing existing collaborations into new models** will be of high importance for the future of the CITYMAKERS network. We look forward to identify how to grow stronger together with dialogue partners from the previous two years, such as with the China Center at TU Berlin and their network **URBANIXX**, with civil society actors such as our citymaker friends from RAUMSTATION and in particular also with other Robert Bosch Foundation supported programs such as the **Actors of Urban Change in Europe**, or city related thematical groups hosted by the Robert Bosch **Alumni Academy**, and last but not least with similar bilateral and multilateral programs supported by other international foundations. Here, we act in the spirit of the recommendation by Sandra Breka, member of the Robert Bosch Stiftung Board of Management: “To help the network of CITYMAKERS China – Germany grow, I believe it needs to develop into a multilateral platform.”

What else is important at the bottom line?

Community is Key – The new paradigm of “Co-“: From collaboration to co- housing/working/living: Although the understanding of livable cities can differ depending on people and context, there is one common value that the CITYMAKERS program identifies as valid throughout cultures: Creating a community. Our CITYMAKERS WeChat community is such a place, which gives a feeling of “belonging to the same trusted larger circle”. We are going to further support and facilitate this community building with online-exchange as much as with off-line exchanges. A first off-line community meeting in the CONSTELLATIONS CITYMAKERS-studio in Berlin Weissensee is scheduled for November 23rd. Furthermore, we are looking for actors/agents in two other cities in Germany who are interested in being host to a **CITYMAKERS Map&Meet Event**. Reach out to us!

Contacts:

Katja Hellkötter | Founder and Managing Director
CONSTELLATIONS International, overall lead CITYMAKERS China-Germany, head of the CONSTELLATIONS Berlin office, kh@constellations-international.com

Luisa Keinprecht | Project Manager CONSTELLATIONS International Berlin office, Project Assistant for CITYMAKERS China-Germany, lk@constellations-international.com



Rural moves – The Songyan story

The Theme

Rethinking strategies for rural development is a critical global issue today. Dynamic urbanization processes shape large areas of the world, while the revitalization of rural regions has been neglected for a long time. This has consequently given rise to pressing socio-economic and political challenges all over the world. To stimulate an international discussion, Aedes Architecture Forum Berlin presented the exhibition Rural Moves – The Songyang Story this year, which led to the initiation of this conference. The focus will be on the duality and interrelations between the urban and the rural, seeking to explore what culture and architecture can contribute to rural renewal in interplay with economy, spatial planning, infrastructure, and ecology. The goal of this international knowledge exchange of holistic strategies and best practice examples is to discuss new concepts, which might ultimately establish a new rural confidence and identity as well as economic progress and reliability as major incentives to make people stay in or even return to the “hinterland”.

The conference

The conference invites policymakers, architects, planners, researchers, economists, curators and related professionals to the successful case study area of Songyang to share and archive experiences, strategies and new ideas for the development of the 'global rural region' of the future. This region in the southwest of Shanghai became a pioneer in the sensitive redevelopment of rural areas by implementing carefully balanced “architectural acupuncture”.

Against this backdrop, the conference is structured around three main sessions complemented by excursions into the region to illustrate the topic and to offer opportunities for exchange: (i) a cluster of ten impulse statements to boost the conference with a wide range of positions by stakeholders from the various fields of practice and research in the rural context, panel discussions on (ii) “Culture + Architecture” and (iii) “Ecology and Economy + Architecture”.

The contributions and results of the conference will be compiled in a publication and in the Aedes online archive to deepen and expand the international discussion on the redevelopment of rural regions and to make the content accessible for those not able to follow the event in person.

Wann

8. November bis 10. November 2018

Wo

Regions on the Rise
Huancheng W Rd
323400 Songyang, China

Organisator

Regions on the Rise

Links

www.regionsontherise.org



Conference in China: Regions on the Rise. Culture and Architecture as Drivers for Rural Development

8-10 Nov 2018

International Conference in Songyang, China

Shimen Bridge, Shimen Village



photo: Han Dan

Dates: Thursday, 8 November – Saturday, 10 November 2018

Location: Songyang County, China

Host: CPC Songyang County Committee, Songyang County People's Government

Conceptualized by: Aedes Architecture Forum & Network Campus Berlin

Website: www.regionsontherise.org

Rethinking strategies for rural development is a critical global issue today. Dynamic urbanization processes shape large areas of the world, while the revitalization of rural regions has been neglected for a long time. This has consequently given rise to pressing socio-economic and political challenges all over the world. To stimulate an international discussion, Aedes Architecture Forum and Network Campus Berlin initiated the conference Regions on the Rise. Culture and Architecture as Drivers for Rural Development, which will take place in Songyang, China from 8-10 November 2018.

THE CONFERENCE

will focus on the duality and interrelations between the urban and the rural, seeking to explore what culture and architecture can contribute to rural renewal in interplay with economy, spatial planning, infrastructure, and ecology. The goal of this international knowledge exchange of holistic strategies and best practice examples is to discuss new concepts, which might ultimately establish a new rural confidence and identity as well as economic progress and reliability as major incentives to make people stay in or even return to the "hinterland". Against this backdrop, the conference is structured around three main sessions complemented by excursions into the region to illustrate the topic and to offer opportunities for exchange: (I) a cluster of ten impulse statements to boost the conference with a wide range of positions by stakeholders from the various fields of practice and research in the rural context, as well as panel discussions on (II) "Culture + Architecture" and (III) "Ecology and Economy + Architecture".

BACKGROUND

The conference is part of the long-term international inquiry program 'Regions on the Rise' by Aedes Network Campus Berlin. In various formats and places it brings together policymakers, architects, planners, researchers, economists, curators and related professionals to share and archive experiences, strategies and new ideas for the development of the 'global rural region' of the future.

The Songyang conference in November was born out of the very successful Aedes exhibition 'Rural Moves – The Songyang Story' recently presented in Berlin and currently on show in the official program of the 16th Architecture Biennale in Venice. The exhibition displays a series of carefully balanced architectural "acupuncture" in Songyang – a region in the southwest of Shanghai that became a pioneer in the sensitive redevelopment of rural areas. They were implemented by the committed Beijing-based architect Xu Tiantian in close collaboration with Songyang's magistrate and locals.

CONFIRMED LECTURERS

Distinguished protagonists from many regions of the world and from China promise an intense, controversial, and multi-layered dialogue!

- Hitoshi Abe Professor, Department of Architecture and Urban Design, UCLA, Los Angeles, USA; Principal, Atelier Hitoshi Abe, Sendai, Japan
- Lina Annab Minister of Tourism and Antiquities, Amman, Jordan
- Aric Chen Curator-at-large, M+, Hong Kong
- Hans-Jürgen Commerell Director, Aedes Network Campus Berlin and Architecture Forum, Germany
- Nuria Costa Mexican Women's Network, Civic Society, Morelos, Mexico
- Farrokh Derakhshani Director, Aga Khan Award for Architecture, Geneva, Switzerland
- Kristin Feireiss Director, Aedes Architecture Forum and Network Campus Berlin, Germany
- FENG Jicai Author and Artist, Tianjin, China
- Angel Luis Fernandez Head of Research Center for Urban Design, ESNE. School of Design, Innovation and Technology, Madrid, Spain
- Angelika Fitz Director, Austrian Architecture Museum, Vienna, Austria
- HU Haifeng Mayor of Lishui City, China
- Huang Yung Sung Art Director, Han Sheng Magazine, Taiwan
- Adrian Iredale Director, Iredale Pedersen Hook Architects, Perth, Australia
- Erhard An-He Kinzelbach Professor, Founder KNOWSPACE, Berlin, Germany
- Eduard Kögel Architecture Historian, Berlin, Germany
- LI Xiangning Professor, Tongji University, Curator Chinese Pavilion at the Venice Biennale 2018, Shanghai, China
- LIU Shouying Economist, China
- Juan Mayr Maldonado National Commission for Conciliation, Bogotá, Colombia
- Miriam Mlecek Researcher, formerly Leibniz University Hanover; Programme Manager Aedes Network Campus Berlin, Germany
- Andreas Ruby Director, SAM Swiss Architecture Museum, Basel, Switzerland
- Remy Sietchiping Leader, Regional and Metropolitan Planning, UN-Habitat, Nairobi, Kenya
- WANG Jun Magistrate Songyang County, China
- XIANG Zhaolun Minister for Culture at the Central Government, Beijing, China
- XU Tiantian Architect, Beijing, China
- ZHANG Ke Founding Principal, ZAO/standardarchitecture, Beijing, China; Harvard University Graduate School of Design, Cambridge, USA
- ZHANG Lei Professor, Founder & Chief Architect, Nanjing University; AZL architects, Nanjing, China
- ZHANG Yue Professor, Tsinghua University, Beijing, China
- ZHU Jingxiang Professor, Hong Kong University, China

CONFIRMED FRONT-ROW PEERS

- Winka Dubbeldam Assoc. AIA, Miller Professor and Chair, Department of Architecture, University of Pennsylvania, Philadelphia, USA

- Kerstin Faber Project Manager, IBA Thüringen, Apolda, Germany
- Julio Gaeta Dean ISAD. Institute of Architecture and Design, Chihuahua, Mexico
- Nadine Godehardt Deputy Head of Research Division Asia, German Institute for International and Security Affairs (SWP), Berlin, Germany
- Annette Heimann Managing Director, Asia-Pacific-Forum, Berlin, Germany
- Katja Hellkötter Founder/Director, Constellations International GmbH; Curator, Citymakers Germany-China, Berlin/Shanghai, Germany/China
- Hubert Klumpner Co-Director, Urban-Think Tank; Professor for Architecture, ETH Zurich, Switzerland
- Luby Springall Principal, Gaeta Springall Arquitectos, Mexico
- Eva Sternfeld Science Advisor, German-Sino Agricultural Center (DCZ), Beijing, China
- Christoph Stroschein Managing Director, GESI Deutsche Gesellschaft für Systeminnovation mbH, Berlin, Germany

PARTICIPATION IN THE CONFERENCE

The conference is open to the public. Participation is free of charge and includes guided excursions, transfer shuttle from the nearest airports, and meals. Participants have to cover their own flight and accommodation costs. Only a limited number of seats is available to the public. Registration deadline: 8 October 2018.

Detailed information on the conference program and on how to register can be found at:
<https://www.regionsontherise.org/>

Additional Information:

Conference Proceedings:

The contributions and results of the conference will be compiled in a publication and in the Aedes online archive to deepen and expand the international discussion on the redevelopment of rural regions and to make the content accessible for those not able to follow the event in person.

Rural Moves and Songyang as Case Study

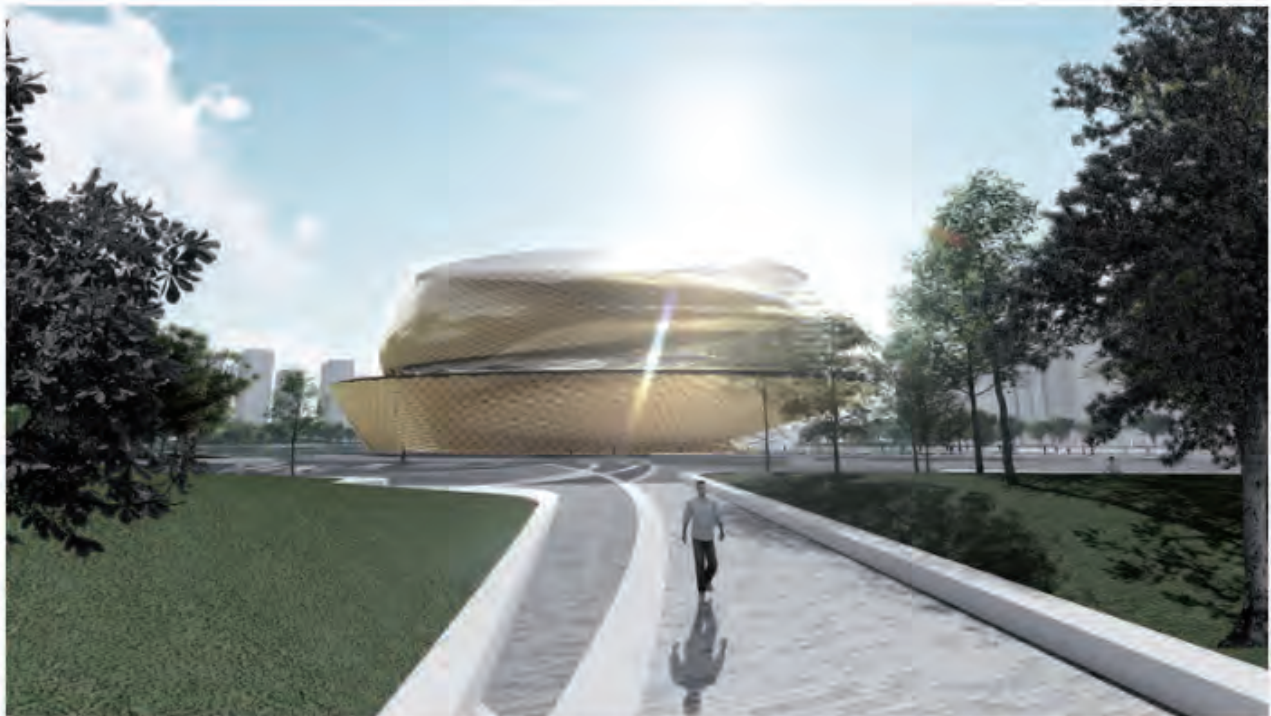
Aedes is invited to present the exhibition 'Rural Moves – The Songyang Story' at this year's Frankfurt Book Fair from 10 – 14 October 2018.

In 2019, an updated version of the exhibition will be shown at:

- Austrian Architecture Museum, Vienna (Az W), 14 March – 23 April 2019
- S AM Swiss Architecture Museum, Basel, 28 September – 10 November 2019

For further information please contact:

Dunya Bouchi, Aedes Architecture Forum
 Christinenstr. 18-19, 10119 Berlin
 +49-30-282 70 15
 db@ancb.de



Winka Dubbeldam's winning submission for the the Asian Games Sports Park Competition 2018

Winka Dubbeldam in China

Miller Professor and Chair of Architecture [Winka Dubbeldam](#) was invited to join the [ANCB The Aedes Metropolitan Laboratory Conference](#) in Songyang, China from November 8-10, where she will meet Xiang Zhaolun, Minister for Culture at the Central Government, Beijing, China, Kristin Feireiss, Director Aedes Architecture Forum and Network Campus, Berlin, Germany, and Hu Haifeng Mayor of Lishui City, China, among others to discuss the relevance of the Rural for our Urban environments.

Dubbeldam is regularly in China where she is also a juror on the Annual Award UIA-HYP Cup 2017 alongside Deans from Tsinghua, Beijing and Tongji, Shanghai Universities, among others. Dubbeldam recently won the [Asian Games Sports Park Competition 2018](#) in Hangzhou with her office [Archi-Tectonics](#). She designed with her team a mile long park, two stadiums, a shopping mall, and visitor center. The park will open in March 2021.



Rural moves – The Songyan story

The Theme

Rethinking strategies for rural development is a critical global issue today. Dynamic urbanization processes shape large areas of the world, while the revitalization of rural regions has been neglected for a long time. This has consequently given rise to pressing socio-economic and political challenges all over the world. To stimulate an international discussion, Aedes Architecture Forum Berlin presented the exhibition Rural Moves – The Songyang Story this year, which led to the initiation of this conference. The focus will be on the duality and interrelations between the urban and the rural, seeking to explore what culture and architecture can contribute to rural renewal in interplay with economy, spatial planning, infrastructure, and ecology. The goal of this international knowledge exchange of holistic strategies and best practice examples is to discuss new concepts, which might ultimately establish a new rural confidence and identity as well as economic progress and reliability as major incentives to make people stay in or even return to the "hinterland".

The conference

The conference invites policymakers, architects, planners, researchers, economists, curators and related professionals to the successful case study area of Songyang to share and archive experiences, strategies and new ideas for the development of the 'global rural region' of the future. This region in the southwest of Shanghai became a pioneer in the sensitive redevelopment of rural areas by implementing carefully balanced "architectural acupuncture".

Against this backdrop, the conference is structured around three main sessions complemented by excursions into the region to illustrate the topic and to offer opportunities for exchange: (i) a cluster of ten impulse statements to boost the conference with a wide range of positions by stakeholders from the various fields of practice and research in the rural context, panel discussions on (ii) "Culture + Architecture" and (iii) "Ecology and Economy + Architecture".

The contributions and results of the conference will be compiled in a publication and in the Aedes online archive to deepen and expand the international discussion on the redevelopment of rural regions and to make the content accessible for those not able to follow the event in person.



Rethinking the Countryside



Brown Sugar factory, exterior

Photo © Wang Ziling



November 26, 2018

Clifford A. Pearson

Around the world, hundreds of millions of people have migrated from villages to cities during the past five decades. In Latin America, Africa, Asia, Europe, and North America, the process has fed the rapid growth of hyper-dense metropolitan regions and left rural areas bereft of people and resources. While most attention has focused on the issues raised by mega-cities such as Sao Paulo, Lagos, Bangkok, London, and New York, a growing number of people are now looking at what can be done to rethink the countryside and bring it into the 21st century. An international conference, organized by the Aedes Architecture Forum & Network Campus Berlin and hosted by the government of a rural county in eastern China, examined strategies employed by that county government to bring people and economic activity back to its villages.

Part of a larger initiative by Aedes called “Regions on the Rise,” the conference brought together architects, government officials, scholars, and sociologists in the second week of November to discuss the topic of rural development and some of the specific efforts being done in SongYang, a county in Zhejiang Province about 285 miles southwest of Shanghai. It followed an exhibition this past spring at the Aedes Gallery in Berlin that focused on a series of small building projects by architect Xu Tiantian in SongYang and picked up on the positive response to the China Pavilion at this year’s Venice Architecture Biennale, which looked at “Building a Future Countryside.”

“What we are seeing today are growing centers and shrinking regions,” said Eduard Kögel, a German scholar who has studied urban form in China and Europe. “This has resulted in a lack of housing in cities and a lack of infrastructure in the hinterlands.” To deal with this situation, Wang Jun, the secretary of the SongYang County Party Committee and the official most responsible for redeveloping SongYang, said, “We need to mobilize players in both the public and private sectors.”

Since completing a small bamboo pavilion rising from tea fields and an agricultural museum inserted within a set of renovated houses in 2014, Xu and her Beijing-based firm DnA_Design and Architecture have applied what she calls “architectural acupuncture” to key points in SongYang. Recent projects include a brown sugar factory, a museum to the local Hakka culture, a memorial hall honoring the 14th-century scholar Wang Jing, a tofu factory, and a wood addition to an old stone bridge. Playing a variety of roles—from planner and designer to social mobilizer and political organizer—Xu has used a “low-budget, low-tech” approach to create reasons for villagers to stay in SongYang and tourists to visit.

“Tiantian has been a catalyst for rethinking SongYang,” said Hans-Jürgen Commerell, director of the Aedes Network Campus Berlin. “She is fertilizing the future.”

The conference featured visits to many of Xu’s projects in SongYang, as well as talks by people such as Kristin Feireiss, director of the Aedes Architecture Forum; Farrokh Derakhshani, director of the Aga Khan Award for Architecture; Li Xiangning, curator of the Chinese Pavilion at the 2018 Venice Architecture Biennale; Nuria Costa Leonardo, head of the Mexican Women’s Network; Remy Sietchiping, leader of the Regional and Metropolitan Planning for UN-Habitat; Aric Chen, a curator-at-large for the M+ museum in Hong Kong and [RECORD contributor](#); and architects Zhang Ke, Zhang Lei, Hitoshi Abe, and Erhard An-He Kinzelbach.

“In the past, ‘rural’ often had a negative connotation,” said Derakhshani. Changing that will require a long-term effort to leverage local know-how, engage villagers in creating new opportunities, and developing replicable models, he explained.



Rural moves – The Songyan story

The Theme

Rethinking strategies for rural development is a critical global issue today. Dynamic urbanization processes shape large areas of the world, while the revitalization of rural regions has been neglected for a long time. This has consequently given rise to pressing socio-economic and political challenges all over the world. To stimulate an international discussion, Aedes Architecture Forum Berlin presented the exhibition Rural Moves – The Songyang Story this year, which led to the initiation of this conference. The focus will be on the duality and interrelations between the urban and the rural, seeking to explore what culture and architecture can contribute to rural renewal in interplay with economy, spatial planning, infrastructure, and ecology. The goal of this international knowledge exchange of holistic strategies and best practice examples is to discuss new concepts, which might ultimately establish a new rural confidence and identity as well as economic progress and reliability as major incentives to make people stay in or even return to the "hinterland".

The conference

The conference invites policymakers, architects, planners, researchers, economists, curators and related professionals to the successful case study area of Songyang to share and archive experiences, strategies and new ideas for the development of the 'global rural region' of the future. This region in the southwest of Shanghai became a pioneer in the sensitive redevelopment of rural areas by implementing carefully balanced "architectural acupuncture".

Against this backdrop, the conference is structured around three main sessions complemented by excursions into the region to illustrate the topic and to offer opportunities for exchange: (i) a cluster of ten impulse statements to boost the conference with a wide range of positions by stakeholders from the various fields of practice and research in the rural context, panel discussions on (ii) "Culture + Architecture" and (iii) "Ecology and Economy + Architecture".

The contributions and results of the conference will be compiled in a publication and in the Aedes online archive to deepen and expand the international discussion on the redevelopment of rural regions and to make the content accessible for those not able to follow the event in person.



Culture and Architecture as Drives for Rural Development: International Conference in Songyang, China

(Only in Chinese) Build up confidence for the rural and find out a new way for its development.

2018-11-16

业主寻找设计师 / 设计师寻找业主

谷德项目对接平台
上百个项目，成单率19%

点击加入

Project Specs

- 📄 Design Firm : DnA_Design and Architecture Studio
- 📍 Location : China
- 📁 Type : News 资讯展讯活动竞赛等信息 Architecture
- 🌟 Tags : Zhejiang 浙江

2018年11月8日~10日，浙江松阳与德国Aedes国际建筑论坛合作，共同举办首届浙江松阳·乡村振兴论坛，以学、南京大学、《汉声》杂志等各个领域的专家学者，根据其专业领域或所在机构对乡村发展作出的研究及积累的经验作出报告和各自陈述，进一步推动国际文化交流合作，向世界讲好松阳故事、展现松阳城乡形象。

论坛主题：文化与建筑——乡村发展的驱动力

论坛时间：2018年11月8日~2018年11月10日

论坛地点：浙江省丽水市松阳县

论坛演讲嘉宾：

- 德国柏林Aedes建筑论坛创始人、馆长，ANCB—Aedes大城市研究所创始人、荷兰之狮十字勋章得主 克里斯汀·费莱斯女士
- 联合国人居署区域和都市规划主管 雷米·西斯平先生
- 阿卡汉建筑奖执行总监 法洛克·德拉克·沙林先生
- 哥伦比亚国家调解委员会 约翰·梅尔·马儿多纳多先生
- 德国柏林Aedes建筑论坛馆长、ANCB—Aedes大城市研究所创始人 汉斯·尤尔根·科莫瑞尔先生

- 德国柏林Aedes建筑论坛策展人 爱德华.库格尔先生
- 西班牙马德里ESNE设计、创新和科技大学城市规划研究中心主任 安格尔.路易斯.费尔南德斯先生
- 奥地利建筑博物馆馆长 安格莉卡菲茨女士
- 前汉诺威莱布尼兹大学研究园, 德国柏林Aedes建筑论坛研究会议中心项目经理 米里亚姆.米勒切克女士
- 墨西哥妇女联盟 努丽娅.科斯塔女士
- 澳大利亚IPH建筑事务所总监 艾德里安.史蒂文.艾尔代尔先生
- 瑞士建筑博物馆馆长 弗里德.安德里亚斯.鲁比先生
- 美国加州大学洛杉矶分校建筑与城市规划学院教授 安倍仁史先生
- M+博物馆设计和建筑策展人 陈伯康先生
- 德国知识空间工作室创始人、教授 埃哈德.金斯博先生
- 台湾《汉声》杂志创始人 黄永松先生
- 北京DNA建筑设计事务所创始人、建筑师 徐甜甜女士
- 北京“标准营造”建筑事务所创始人 张轲先生
- 南京AZL建筑事务所创始人、建筑师, 南京大学建筑学院教授 张雷先生
- 香港中文大学教授 朱竞翔先生
- 2018威尼斯建筑双年展中国馆策展人, 同济大学教授 李翔宁先生

松阳有着1800多年的建县历史, 乡村散布着形态古朴、风貌依旧的众多古村, 至今仍保留着百余个格局完整的传统村落, 是中国历史文化名城古镇名村体系保留最完整、乡土文化传承最好的地区之一, 被誉为“古典中国”的县域标本。过去几年, 松阳提出“文化引领的乡村复兴”, 遵循“活态保护, 有机发展”的理念, 系统推进生态修复、经济修复、文化修复、人心修复。在各个村庄以中医调理、针灸式点位介入, 按照最少最自然最不经意最有效的人工干预原则, 提炼每个村庄历史文化传统和特色产业, 精准定位, 建立以高品质农业为基础、一二三产深度融合的资源增长型经济发展体系, 促进村村联系, 城乡互动, 融合发展, 成为住建部的“中国传统村落保护发展示范县”和国家文物局的“传统村落保护利用试验区”。

▼活动现场, event venue



其中，今年9月初，全国首个整县推进试点县——松阳县“拯救老屋行动”一期项目142幢老屋全面完工验收，并在实践中大胆创新，初步探索出了一条社会组织与地方政府合作推动，群众自发参与的私人产权文物建筑保护利用的新路子。许多修复的老屋，在改善居民生活条件、提供村民公共活动空间、培育乡村新型业态等方面发挥了积极作用，并有效提升了普通百姓对老屋的价值判断和文化自觉，修缮项目还带动了乡土工匠的回归以及传统手艺的恢复。今年，中共中央、国务院向全国印发的《乡村振兴战略规划（2018-2022年）》，在专栏10第五点中，明确提出：实施“拯救老屋”行动，开展乡村遗产客栈示范项目，探索古村落古民居利用新途径，促进古村落的保护和振兴。

▼松阳县环境概览， overall view of Songyang ©韩丹



德国柏林Aedes建筑论坛创始人克里斯汀·费莱斯女士在开幕致辞中提到，“乡村振兴计划”的影响下，许多建筑师团队短短几年间在乡村做了很多建筑实践，采用建筑针灸疗法，振兴了当地乡村的经济。松阳便是这样一个有实质行动，改变振兴的地方。这也是本次论坛选择在松阳举办的原因。同时，中国乡村中新的建筑物也能够为国外提供非常好的典范。

松阳在乡村振兴中提倡“中医调理、针灸激活”，就是不希望对乡村进行大动干戈地建设，而是通过点位上的适度刺激，慢慢恢复其生命力。近几年的生动实践证明，在充分尊重当地传统、文化、产业和空间肌理的基础上，艺术建筑在乡村以微小的方式介入，提取和诠释各个村庄的特色文化、特色产业，形成一系列小而精、小而美、小而特的文化空间、生产空间，重现文化的力量和乡村的价值，给松阳乡村振兴带来了深刻的意义。

▼DnA建筑事务所创始人徐甜甜演讲

Xu Tiantian giving a lecture on the forum



DnA建筑事务所从2014年开始集中参与了松阳县的乡村建设，通过每个村庄最具有代表性的历史文化或产业元素，以村庄功能为载体的建筑针灸来激活整个地区。创始人徐甜甜表示，乡村建设有很多场地和观念的约束，**建筑师要以让社会接受的方式介入，积极寻求互通和认同**。过去五年间她在松阳的工作也是对传统意义上建筑师身份的一种调整转换，他们在整个过程中也要参与项目的前期调研和工作内容的确立，组织一些教学文化交流，甚至包括拓展商业运营等。在几年的实践中，他们就地取材，因地制宜地采用低价低技建造。松阳的针灸策略也包括项目资金的控制，投入小量的建设资金，加强各方的参与度，影响村庄后续的持续发展，探讨一种可持续性的社会发展模式。这种模式不仅限于松阳本地，它也可以广泛地推广到其他地区。（更多关于DnA建筑事务所，请至：[DnA_Design and Architecture on goood](#)）

石仓契约博物馆

以石仓古契约研究成果为基础，以“契约精神”为灵感，以当地石材为主材，以传统技术建造的石仓契约博物馆，激发了人们对规则的尊重和敬畏，也为当地建筑遗产的修复创造了契机：三个砌石建筑专家把十几个年轻工人训练成了技艺娴熟的石工。如今，博物馆作为一个热门旅游景点，促进了附近村居的翻修，也吸引了外来资本投资，附近修建了鸣柯里文化民宿，带动了乡村旅游的发展。



白老酒工坊，豆腐工坊

除了契约博物馆，石仓周边的山头村新建了白老酒工坊，蔡宅村新建了豆腐工坊，更是带动了文化传承和经济发展。山头村优质的水源孕育了优质的白老酒，村中近半数人口酿造销售，但存在着生产环境低散的现状。由建筑设计师徐甜甜设计的白老酒工坊，主体为现浇式清水混凝土拱顶式框架结构，承载着生产酿造区、品味交流区、窖藏鉴赏区三个不同的功能。现如今该工坊不仅成为白老酒生产的标准化示范工坊，也成了乡村旅游的一道靓丽的风景点。

同样由徐甜甜老师设计的豆腐工坊，汲取了当地土木结构民居的特点，采用木桁架拼装结构，阶梯式空间布局，并采用了传统的斜屋面、小青瓦屋顶设计。占地面积1234平方米的豆腐工坊，已成为集油豆腐加工、参观、体验于一体的豆腐产业发展项目。并且改变了家家户户单纯制作油豆腐的单一产业，豆腐生产过程中的豆腐水将会加工成护肤品等，豆腐渣则成为猪的饲料，猪粪成为种黄豆的养料。

▼豆腐工坊游学照片



而随着白老酒和豆腐产业知名度和美誉度的提升，也带动了当地村民自发种植水稻和黄豆，推动了种植业和养殖业的发展。至此，通过富有生命力且带有地区特色的建筑针对性把脉针灸，赋予不同地域不同功能属性，进而带动了整个石仓片区系统性可持续性的乡村循环式发展，激活了片区活力。

不仅契约博物馆、白老酒和豆腐工坊，在松阳乡村，围绕松阴溪和8条艺术创造路线，分布着平田农耕馆、大木山竹亭（[点击这里查看更多](#)）、大木山茶室（[点击这里查看更多](#)）、红糖工坊、王景纪念馆、以及松阴溪沿途休闲驿站、水文公园、独山驿站等不同大小和功能的建筑，它们成为符合现代需求的多功能空间，是当地人文特色、生产生活形态的展示空间，当地居民和外来游客开展社交娱乐活动的公共文化空间，当地传统农特产品、传统手工展示售卖的发展空间，这些集功能性、艺术性、思想性为一体的建筑，成为引导一种业态发展、激活一个片区复兴的很好载体。

红糖工坊

樟溪乡兴村是远近闻名的产糖区，种甘蔗、制红糖的历史已有百年，古法熬制的红糖虽然美味，但存在价格低，以及加工环境低散乱的现状。为传承和发展已有数百年历史的传统业态，徐甜甜设计建造了以古老传承为内核，以现代风貌为外形的兴村红糖工坊。流水线古法加工大大提高了红糖的品质和产量，大批游客的到访提高了红糖的价格，红糖价格从2011年的每斤8元提高到2017年的每斤22元，兴村的60亩甘蔗地亩均产值达2万元，远超种植茶叶等经济作物的产值。除了生产加工，红糖工坊也是一个文化体验、建筑艺术、文化公共空间、产品展卖等功能的综合文旅项目，成为区域内的重要公共活动空间。如今，依托红糖工坊，该村也在致力于发展乡村旅游，增加村民的收入。

▼红糖工坊（[点击这里查看更多](#)），Brown Sugar Factory (click [HERE](#) to view more) ©王子凌



王景纪念馆

王景是松阳历史名人。王景纪念馆的落成，给这一自然景观资源贫乏村带来了希望，它既用作文化展示，重建了人文自信，也是村里公共文化活动和休闲场所，用于开展民俗文化活动，传承耕读文化和慈孝文化。此外，发挥名人效应，创立了玉林常斋品牌，并着手推进以王景名人文化为特色的王景状元饼、王景状元酒等文创产品。目前，作为松阳县城郊结合部区块有机更新和活态保护利用的典范，把王村纳入全县文化旅游发展系统，形成“延庆寺塔—黄家大院—石门廊桥—松阴溪—王村”这一主要线路，文旅融合推进产业发展，促进了农民增收。

▼王景纪念馆（点击[这里](#)查看更多），Wang Jing Memorial Hall (click [HERE](#) to view more) ©王子凌



利用建筑凝聚人心，让百姓树立了文化自信、经济自信、产业自信，也让乡村建立了新自信。年轻一代受到政府相关政策的鼓励，开始从城市回流乡村，并通过他们的创新思维，对乡村的各类资源进行改造和利用，也带动了具有乡村特点的新型经济发展。

“今天的乡村振兴之路，理应是一条让乡村留住‘形’守住‘魂’吸引‘人’的生态文明之路、美丽宜居之路。”松阳正在为乡村振兴探索出新的路径。在经济学家刘守英看来，“松阳征途”正在路上。“**松阳是以乡土历史文化为基础，通过建筑师等介入，在保持村落肌理基础上活化乡村，同时和乡村特色产业互动。**这条路如果能走通，那就闯出一条后发地区的发展路子。能否持续，取决于几点：这些试点村能否带动其他村一起发展、通过村落激活的传统产业能否真正复兴、作为主导产业的茶产业和旅游业与村落之间能否良性互动——如果这些都能做到，松阳就走通了一条以乡村和农业优先发展带动区域现代化的新路。”

来自松阳的手工艺人叶科创新了古老的扎染技术，与云上平田民宿合作，在徐甜甜设计的艺术家工作坊建立了云缬坊，利用周围山上的植物和茶叶做染料，把丝绸和扎染手艺结合起来，做成文创产品，提升价值。叶科还把这门手艺带到了法兰克福书画展上，引来了众多体验者，国际出版商协会前主席赫曼Herman Spruijt参观时就被松阳手工坊的茶扎染吸引，倍感神奇。如今，他的云缬坊染织业务拓展到扎染蜡染、传统刺绣、竹编草编、端午香包、发簪女饰、年画年俗、服饰拼布等。今年他在扩大团队，增加创意体验项目的同时，也让村民参与进来：找村里的阿姨做一些手工产品的针线活，找村里的大叔种植板蓝根等植物染料，给他们带来收入。

此外，大木山茶室的孟小雪，在传统茶产业中融进了文化、培训等业态，拓展了发展的空间；云上平田民宿综合体的叶大宝，在民宿中导入精品农业、民俗文化，使传统与现代有机融为一体；蔡宅村的李晓英承包村里闲置用地，与村里低收入农户签订种植、采购大豆协议，生态化种植黄豆得到了品质保障，也带动了农户增收……这些人的回归创业也为其他年轻人作了很好的示范，让他们意识到乡村的希望和价值所在。

▼各种被激活的传统手工创意活动



“德国和中国在农村问题上存在共性。松阳用文化引领乡村发展，把离开家乡的年轻人吸引回来，这对中国其他地区、对其他国家都是很好的借鉴。”今年3月，德国柏林Aedes建筑论坛以“乡村变迁”为主题，举办“乡村变迁——松阳故事”展，中国驻德国大使馆公使衔文化参赞陈平在看到、听到松阳故事后称赞道，“松阳故事展是一个非常好的例子，中国的农村通过保留重视自己的文化、自己的传统，同时又引入了新的建筑理念，来振兴农村，使得农村的建设在整个文化的基础上做得更好。”。“松阳故事”已经或者将会陆续在威尼斯国际建筑双年展、巴塞尔瑞士建筑博物馆、维也纳奥地利建筑中心等地续展。

“农村的发展关乎人类未来，松阳以文化建筑为切入点进行建设，松阳实践不仅对德国，对欧洲乃至世界都有借鉴意义。能够‘寻找’到松阳故事，我们由衷地高兴和骄傲。”伊达斯建筑论坛总监汉斯—尤尔根·科莫瑞尔说。Aedes建筑论坛创办于1980年，现已发展成为建筑文化领域的一个国际性平台，先后举办了超过300个知名建筑师以及处于前沿的实验性建筑的展览。

演讲发言整理自会场记录

The article is only in Chinese

乡村振兴国际论坛，向世界讲述松阳故事

松阳旅游 11月8日

今天，以“文化与建筑——乡村发展的驱动力”为主题的浙江松阳·乡村振兴论坛已经拉开序幕，这是浙江松阳与德国Aedes国际建筑论坛合作共同举办的论坛，时间将持续到11月10日。且听我们把松阳的故事娓娓道来……



Aedes建筑论坛创办于1980年，现已发展成为建筑文化领域的一个国际性平台，先后举办了超过300个知名建筑师以及处于前沿的实验性建筑的展览。展览和论坛的成功举办、策展视角及成熟的运作在世界范围内享有极高声誉。

→ 游学石仓 ←

11月8日上午，与会嘉宾云集大东坝镇，游学石仓。他们边看传统村落，看那些生长在乡村的艺术建筑，边欣赏松阳本土特色的民俗文化演出。



1

石仓契约博物馆

Shicang Indenture Museum

契约博物馆项目于2017年9月完工并投入使用,该项目由建筑师徐甜甜设计。为传承契约精神,弘扬诚信文化,以契约文化的解读去了解中国传统乡村一个具有高度商业精神的契约社会,一个充满法则的中国村庄的缩影。





市级非物质文化遗产——山边马灯的表演，马灯全部是由8-13岁的孩子将竹马扎在身上进行表演，通过队形的变化来反应古代战场的风云变幻。





2

蔡宅豆腐工坊

Tofu Factory

蔡宅豆腐工坊项目由建筑师徐甜甜老师主持设计，是集油豆腐加工、参观、体验于一体的乡村博物馆项目。蔡宅村出产的豆腐具有色白、精道、韧性好、不易破碎等特点，油豆腐更是豆香浓郁、绵软香滑，是当地代表性的特色美食。





石仓古民居

Shicang Ancient Residence Houses

石仓古民居群是客家人迁徙到浙西南地区的主要居住地，是一个历史悠久的移民集中居住区，是客家丽水移民文化的代表。村内保留有完整的古民居，形成一个庞大的建筑群，村中仍然遵循着闽地的许多习俗。



论坛开幕式

11月8日下午3点论坛开幕！乡村发展是一个世界性的课题，本次论坛以“文化与建筑——乡村发展的驱动力”为主题，旨在交流分享各方有关未来“全球性乡村地区”发展的经验、战略以及新想法，为解决全球乡村发展问题带来更多新的启迪和希望。



中共松阳县委副书记、松阳县人民政府县长李汉勤主持开幕式

围绕乡村复兴（生态、文化和经济）的主议题，各领域的专家学者，根据其专业领域或所在机构对乡村发展作出的研究及积累的经验，作出报告和陈述，进一步推动国际文化交流合作，向世界讲好松阳故事。



中共松阳县委书记王峻致辞



省文化和旅游厅巡视员、副书记傅玮致辞



德国Aedes建筑论坛馆长克里斯汀·费莱斯致辞



联合国人居署区域和都市规划主管雷米·西斯平致辞

新闻 | 浙江松阳·乡村振兴论坛：“文化与建筑——乡村发展的驱动力”

世界建筑 11月13日



2018年11月8-10日，中国浙江省丽水市松阳县与德国Aedes国际建筑论坛合作，以“文化与建筑——乡村发展的驱动力”为主题，共同举办浙江松阳·乡村振兴论坛，邀请了德国Aedes国际建筑论坛馆长克里斯汀·费莱斯、联合国人居署区域和都市规划主管雷米·西斯平等近60名国外嘉宾，以及清华大学、香港大学、同济大学、南京大学等各个领域的专家学者，根据其专业领域或所在机构对乡村发展的研究及积累的经验作出报告和各自陈述，进一步推动国际文化交流合作，向世界讲好松阳故事、展现松阳城乡形象。

松阳在浙江丽水，拥有1800多年建县历史，是浙江省历史文化名城，也是华东地区历史文化名城名镇名村体系保留最完整、乡土文化传承最好的地区之一，乡村中依然保留着100多座格局完整的传统村落，其中国家级传统村落71个，数量位居全国第二。

过去几年，松阳提出“文化引领的乡村复兴”，在各个村庄按照最少、最自然、最不经意、最有效的人工干预原则，提炼每个村庄历史文化传统和特色产业，精准定位，成为住建部的“中国传统村落保护发展示范县”和国家文物局的“传统村落保护利用试验区”。

2018年9月初，全国首个整县推进试点县——松阳县“拯救老屋行动”一期项目142幢老屋全面完工验收，并在实践中大胆创新，初步探索出了一条社会组织与地方政府合作推动，群众自发参与的私人产权文物建筑保护利用的新路径，并有效提升了普通百姓对老屋的价值判断和文化自觉，修缮项目还带动了乡土工匠的回归以及传统手艺的恢复。2018年，《乡村振兴战略规划（2018-2022年）》发布，在乡村文化繁荣兴盛重大工程专栏中，明确提出，实施“拯救老屋”行动，开展乡村遗产客栈示范项目，探索古村落古民居利用新途径，促进古村落的保护和振兴。

近些年，松阳在农业供给侧结构性改革、乡村振兴、传统文化复兴、全域旅游等探索实践和国外交流合作，在国内国际产生了一定的影响，初现了国际化发展的端倪。一批乡村建筑入展全球享有盛誉的德国Aedes建筑论坛、代表国际一流水准的威尼斯国际建筑双年展主题馆以及法兰克福书展等世界级展示平台，并将在巴塞尔瑞士建筑博物馆、维也纳奥地利建筑中心等续展。

“农村的发展关乎人类未来，松阳以文化建筑为切入点进行建设，松阳实践不仅对德国，对欧洲乃至世界都有借鉴意义。能够‘寻找’到松阳故事，我们由衷地高兴和骄傲。”Aedes建筑论坛总监汉斯—尤尔根·科莫瑞尔说。

“乡村振兴应该是一条以生态文明理念为指导，以文化引领为导向，以品质发展为准则，以壮大集体经济为牵引，以共同富裕为追求，系统调整乡村经济、政治、文化和社会结构的‘新路’。”松阳县委主要负责人说，“松阳乡村振兴探索实践还处于起步阶段，还有很多课题需要深入研究和探索实践。”

在经济学家刘守英看来，“松阳征途”正在路上：“松阳是以乡土历史文化为基础，通过建筑师等介入，在保持村落肌理基础上活化乡村，同时和乡村特色产业互动。这条路如果能走通，那就闯出一条后发地区的发展路子。”

11月8日



“文化与建筑——乡村发展的驱动力”为主题的浙江松阳·乡村振兴论坛开幕。会议地点为省级文物保护单位——汤兰公所。

致辞



柏林Aedes建筑论坛馆长克里斯汀·费莱斯

乡村振兴并不仅仅是中国的问题，更是全世界的议题。今天的乡村振兴论坛在松阳举办意义重大，她对松阳提供的良好支持表示感谢，她说，在柏林的Aedes论坛获得了成功，接着是威尼斯双年展，现在又回到了松阳。这次论坛让她们也从松阳吸取了众多经验。她希望论坛结束之后，会有更多的人了解乡村振兴以及乡村发展的重要性。

重要讲座



联合国人居署区域和都市规划主管雷米·西斯平

西斯平阐述了“5P”的概念，即人、居住点、地球、和平、合作伙伴关系，他认为这“5P”能够帮助促进未来的乡村振兴工作。随后详细介绍了联合国人居署的工作和理念，以松阳为参照，纵观目前世界的人居状况，建议与会的各位持续关注世界人居状况的发展和人居相关策略，并以“5P”为思考指导，进行广泛的合作。

11月9日



浙江·松阳乡村振兴论坛现场，来自不同国家各个领域的专家学者围绕乡村可持续发展主题继续开展研讨。

导语



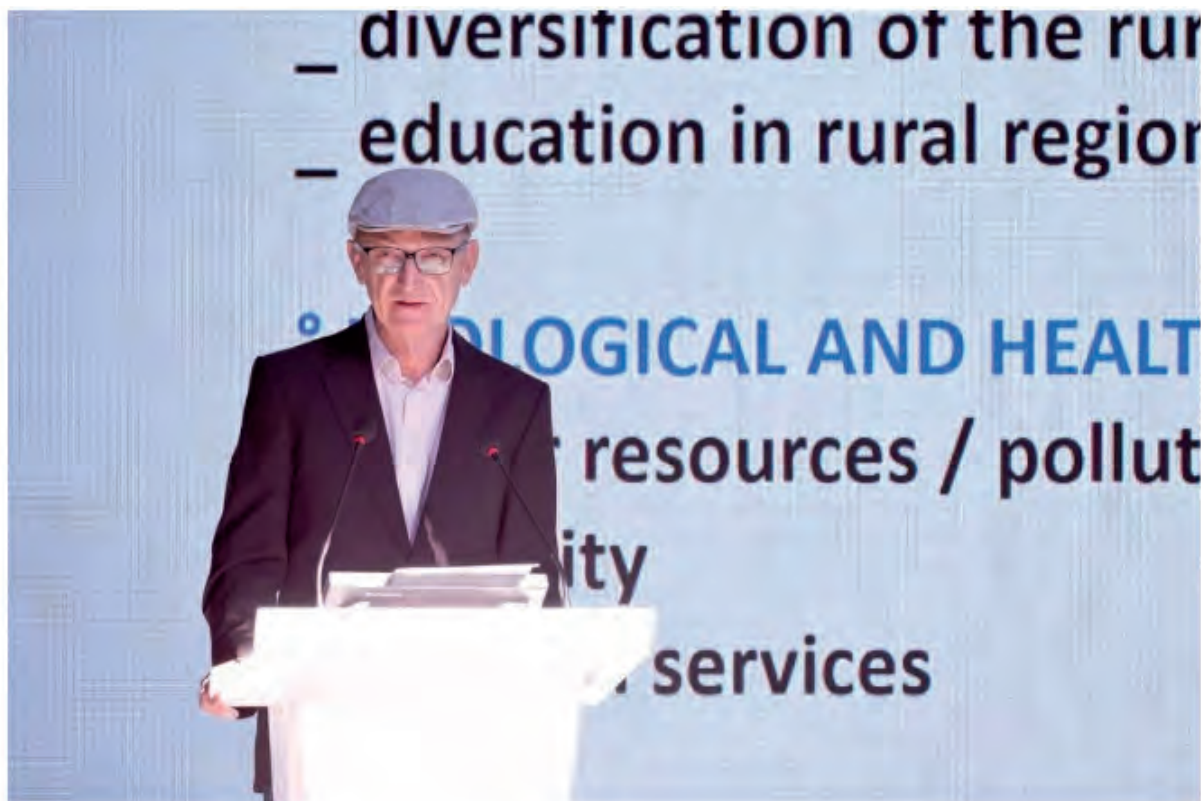
柏林Aedes建筑论坛馆长汉斯-尤尔根·科莫瑞尔

至今，56%的人口都住在乡村地区，同时很多专家甚至是政治家都还在焦头烂额的忙着在城市里面解决各种问题。这是全球性的问题，必须重新去探索城乡之间的关系，并且想尽办法去创造新的概念、新的可能。松阳的故事其实并不能为全球的乡村方面的议题带来解决方案。在这个努力当中，徐甜甜及其团队，以及本地的居民，已经创造了一个互相联系和可持续性的网络。这些建筑物是形成合力的一个主要的原因，并且创造了更多的经济的机会，让乡村地区在未来也成为更好的地方。



北京DnA设计与建筑事务所创始人、主持建筑师徐甜甜

2014年开始，她集中参与了松阳县的乡村建设，由当地政府主导，建筑师和地方社区、地方村民共同调研，通过每个村庄最具有代表性的历史文化或者产业元素，以建筑针灸的方式对乡村功能进行梳理和调整，提升当地的传统文化元素或者是产业，增添公共空间。她说，在松阳的工作也是对传统意义上建筑师身份的一种调整转换，参与项目的前期调研，确立项目工作内容，组织教学、文化交流，甚至包括拓展商业运营，比如招商引资等。她在松阳的实践都是就地取材，因地制宜地地还是用低技进行低价建造，加强各方的参与度，影响村庄后续的持续发展，探讨一种可持续性的社会发展模式，松阳模式并不是说只限制在松阳本地，它也可以广泛的推广到其他的地区。



柏林Aedes建筑论坛策展人爱德华·柯格尔

通过对比德国与中国的情况，可以看到人口的变迁，年轻人都是从农村来到城市。在经济发展和教育方面面临了很大的挑战，乡村应该给予什么样的资源，让乡村的人口可以生活得更好，这是一个很大的问题。在松阳能够看到这里采取的一些行动，来促进乡村经济多样化的发展。针对乡村问题，仍存在健康、环境、身份认同的问题，解决方案并不是非常简单的，需要政界、政府专家和当地人的合作，让本地人参与到这个进程当中，因为最终都是本地的居民需要让这个环境持续下去。



中国文物保护基金会理事长、原文化部副部长、原国家文物局局长励小捷

此次是他第九次到松阳，2016年，在国家文物局的支持下，中国文物保护基金会在松阳县开展了以传统村落保护为主要内容的拯救老屋，整县推进的试点项目。全县有142栋文物建筑得到了修复，有不少的在外打工的村民重新回到家乡创业。松阳的经验是一个成功的经验，是能够复制推广到全国广大传统村落集中地区的经验。松阳选择的道路是文化引领的乡村复兴道路，这条道路是正确的，也是艰难的。



中国文化和旅游部党组成员，国家文物局党组书记、局长刘玉珠

在松阳，由国家文物局支持，中国文物保护基金会组织实施，当地的政府专家学者，当地的民众多方参与的拯救老屋行动，使142栋古民居得到了修复和活化利用。由此唤醒的民宿旅游和文创产业，吸引了人口的回流，推动了古村的复苏，留住了乡愁。拯救老屋行动中，松阳保护和利用并重，进一步将链条延伸，这就为传统村落的保护与可持续发展打下了重要的基础，这也是传统村落保护与活化可行、有效的一条正确的道路。

10×10演讲接力



专家、学者先后交流分享各自的经验体会，为各地乡村可持续发展提供借鉴与参考。



北京标准营造建筑事务所创始人张轲

在乡村地区非常重要的一点就是要去了解建筑如何与周围的自然环境景观融为一体。中国的可耕地一直在减少，最近这几年一直在讨论建筑占用可耕农地的情况，想要把整个形态变成各位现在看到的这样，可不可以进到垂直发展这样的阶段？希望能够拯救更多的土地，把这些空间留给农业，这是他现在正在思考的问题。



西班牙设计、创新和技术学院校长安格尔·路易斯·费尔南德斯

资源枯竭，会对经济等方面造成相当大的影响。这样的问题其实是具有循环性的，这个问题并不仅仅是在单一地区发生，问题发展到最后，将会是整个国家的结构性失衡。今天要解决这个问题所采用的策略叫做COMARCA，也希望让乡村的资源能够协同运用，让每一寸土地都能够被更有效地利用起来。



南京AZL建筑事务所创始人张雷

在中国，城市的发展和乡村的衰落基本上是同时发生的，今天在松阳看到大量漂亮的村庄都还保留着，但在中国其他地方，可能很多更漂亮的村子已经消失或者正在消失。所以作为建筑师，他从5年前开始到乡村做一些项目，希望能把自己前面在建筑中实践的理念和经验带到乡村。他进一步解释了工作中的关键词：第一个是文脉，在乡村可能要更加关心文脉。第二个是材料，尽量使用当地的自然材料，还有公共空间的议题，比如场所的塑造，这些都是在乡村创作中非常重要的一些想法。在乡村，建筑师的工作可以建立城市和乡村之间的桥梁，更重要的是建立一种人和人之间相互信任的关系。在乡村建筑师遇到的不是业主，而是合作者。



奥地利建筑博物馆馆长安格莉卡·菲茨

乡村发展很重要的一点，就是共同去创造他们的价值。这个价值以及创造的动作其实是需要当地的政府以及社会各方面的共同协作才能够做。对于很多的建筑策略，并不是一定要以高科技的方式来作为解决方案，有时候这些传统的方式也可以是解决方案。必须铭记，整个空间的开发是要可持续发展的，需要把经济、环境融合在一起，这个连接是要由上而下和由下而上的，要有地区性，并且具有全球视野。



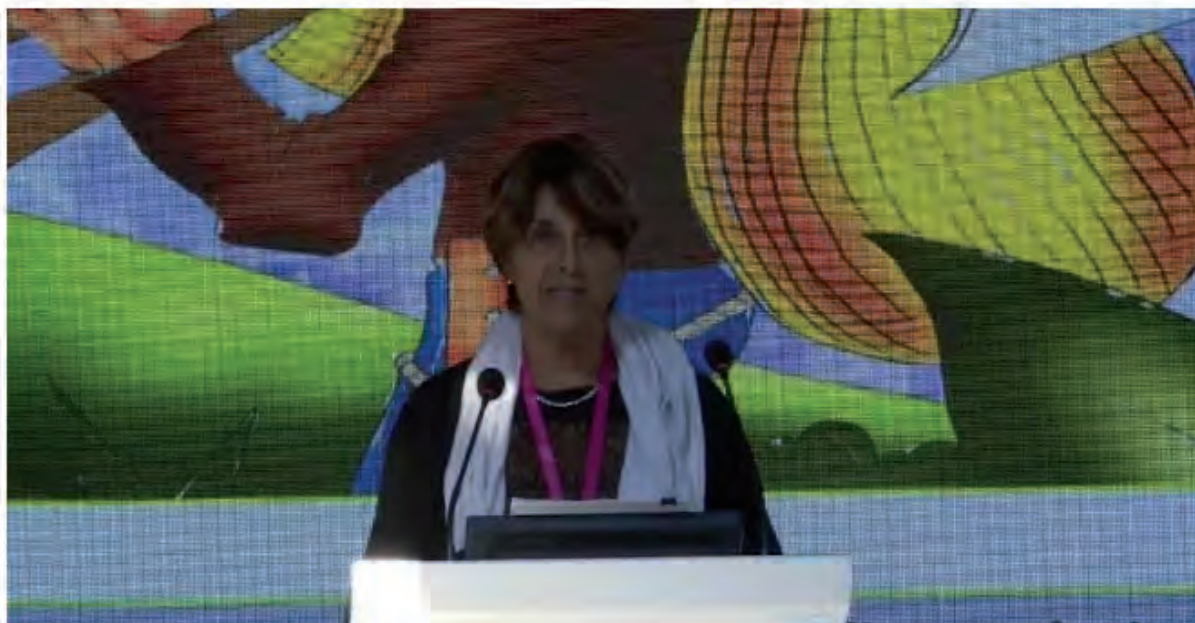
柏林Aedes建筑论坛研究会议中心项目经理米里亚姆·米勒切克

如何让城乡之间结合，这个对建筑的文化其实也是相当重要的。她介绍了德国联邦基金会保护当代文化的一个项目，举办一些文化节，在一些小的区域、小的城镇，让当地人能够真正的利用起这些文化节去保护当地的文化。有的时候在一些区域，发动居民就地取材，影响当地的政府，探索可持续性的乡村居住区，还会提供一些资金的支持以及减税的政策来保护当地的耕地，并支持地方教育。



清华大学建筑学院教授张悦

乡村基础设施的改善，跟城市完全不同，就是城市有高密度、足够的人口密度和半径，很多服务可以用购买的方式来完成。但是乡村居住具有离散性，工作之一是要建立一个共建共享的机制。乡村的问题不是乡村自己能解决的，它一定要放到城乡的互动中来，乡村必须变得更加宽容，吸引更多的人能够进入乡村，这样也能更好的提供乡村建设的平台和机会。



墨西哥妇女联盟工作者努丽娅·科斯塔

她的发言围绕建筑师以及建筑如何达到人文上的平衡。她认为最重要的是要让当地人意识到他们自身的价值、当地的价值所在。要去找寻这些老建筑真正的价值在哪里，以及这些建筑在当地的文化中的价值在哪里。要去找到当地的这些资源，能够跟这些建筑如何结合，无论建筑的大小，用的这些建材应该是对环境无害的，应该是相对低成本的，是能够对环境可持续发展有助益的。



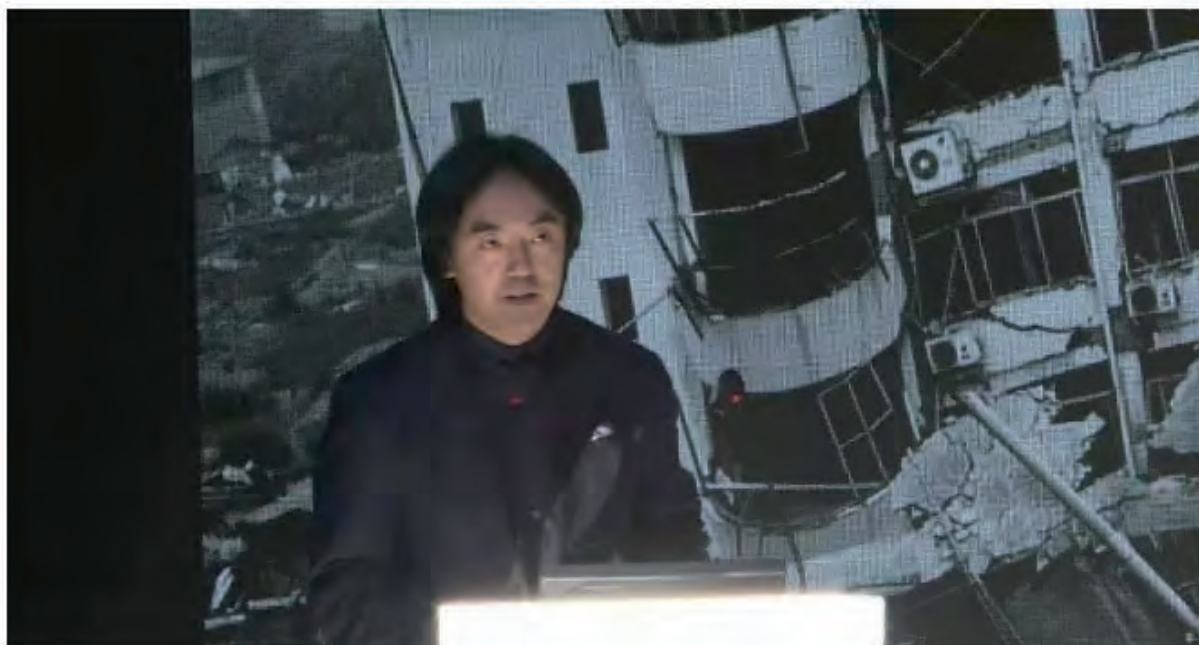
《汉声》杂志创办人黄永松

他在一年两个月之内14次走松阳，历时112天对松阳全县进行文化考察，在野外第一线，体会到松阳最美的是人的风景。松阳最有特点的是这些古村落中人们还延续着传统生活，古老祭祀、节俗、美食、生计、手工艺等，如此原生态又如此齐全，充满生命力与人心的凝聚力。有责任让祖先的文化原汁原味地传承下去。松阳百姓自信与主导其他地方少见的，真正回答了在现代社会如何恢复传统礼俗文化生活，这不是景观式的，而是作用于人心的。



澳大利亚IPH建筑事务所总监艾德里安·史蒂文·艾尔代尔

建筑师的社会责任是发掘建筑如何能够帮助改善人们居住条件的可能性。在建造这些被摧毁的村落的时候，思考如何重新建造，重新把它放回去，才能够有那种当地的老人可以把整个知识进行传承的这样的想法。所以在建造这些建筑的时候，也要考虑到当地固有的一些传统和文化。



香港中文大学教授朱竞翔

建造活动在乡村是最大的投资，所以不管它有多少层，希望它每一层都有一个非常戏剧性的表达，吸引周边乡村和政府的注意力。项目的核心就是一定要以人为本，除此之外他们的团队所推动的建筑不仅仅是建筑活动，也是一次学习和教育的机会。相当于中国练武术的梅花桩的概念，一面是防守，一面是攻击，所以他希望能够在帮助乡村村民的时候，也从他们身上学习，希望在有限的环境和资源里，发挥村民的聪明才智，令他们更好更有尊严地生活。



座谈一：文化+建筑



同济大学建筑与城市规划学院教授、2018年威尼斯双年展中国馆策展人李翔宁

来自同济大学的教授李翔宁，同时也是2018年威尼斯建筑双年展中国馆策展人，他在座谈会上通过短片《我们的乡村》，向所有嘉宾介绍了一系列中国的乡村文化建筑以及他对于“乡愁”、文化与建筑的理解。通过以中国乡村为主要展览内容的双年展策展工作，他试图回应双年展“自由空间”的主题，在大城市中由于各种限制，没有办法自由地去建造，所以自由空间可能意味着乡村地区。中国乡村的建筑物，现在已经成为了一个新的引擎，不断地推动世界上的建筑物艺术的设计，而且又能够很好的保护自己的传统。



美国加州大学洛杉矶分校建筑与城市规划学院教授、Atelier Hitoshi Abe事务所负责人安倍仁史

建筑师为当地的居民设计建筑物，让它与当地的环境融为一体，真的是一件非常让人享受的事情，建筑师成为一个决策的中心，需要去考虑所有的相关因素，与许多人一起作出集体的决策。城镇化的进程实际上是一种思维的模式，居民要分享长期的愿景，需要与当地长期的利益相关方就目标和愿景达成一致。建筑师必须用多样化的方法优化当地的条件，与此同时又要考虑当地的环境以及当地的历史，干预的行动也要进行实际的调整，以此保证能够很好的反映出实际的建筑物实际利用的结果。



阿卡汗建筑奖执行总监法洛克·德拉克沙尼

40年前阿卡汗基金会为中国朋友们做过类似的讲座，讨论乡村问题，在1981年的时候，他们出版了《变化中的农村》。很有趣的是，当今天再回头看这些议题，很多问题仍然存在。随后，他详细介绍了历届阿卡汗建筑奖评选出的许多乡村项目，它们涉及到这些问题的解决方法，其中非常重要的一点是当地人的参与，以及如何让建筑为更多人服务。



瑞士建筑博物馆馆长安德里亚斯·鲁比主持该环节，来自三个不同国家的演讲者从不同的角度切入，分享了他们对于“文化+建筑”的思考和理解，并通过台上对话提供给嘉宾们不同的视野，希望通过分享和对话，让建筑与乡村振兴的关系引起更多人的重视和思考。

11月10日

座谈二：生态及经济+建筑



上午，参加浙江松阳·乡村振兴论坛的与会嘉宾围绕“生态、经济 and 建筑”主题进行交流和讨论。



中国人民大学经济学教授刘守英

他首先就工业化、城市化和乡村现代化背景下如何看待松阳的乡村振兴之路做现场分享。中国目前已经进入城乡中国的结构形态，城乡中国的结构形态跟乡土中国有本质的差别，乡土中国的结构形态是以农为本，以土为生，以村而治，根植于土，要以乡村现代化为起点来启动的现代化，以乡村的工业化来实现活业，以文化实现活人，以乡村价值的提升实现活村，以点带面，实现整个农业产业的转型升级；而

城乡中国的结构形态首先是乡土变故土，其次是整个农业已经告别过去以高劳动投入，提高土地产出的农业形态，再次是乡村变故乡，在城乡中国的结构形态下，中国的农民农民已经高度分化，已不是过去以小规模的、纯农为主的这种小农的形态。



德国KNOWSPACE创始人、教授埃哈德·金斯博

对于年轻一代的建筑师，尤其是在乡村可持续发展上面，必须作出贡献，如此才能继往开来。他希望年轻建筑师们能够跟当地做结合，使用当地的一些材料，融合当地的价值，把一些曾经的老观念以及传统收藏起来，保存好，让它与现代的建筑材料、建筑风格做一个结合。



哥伦比亚国家调解委员会成员约翰·梅尔·马尔多纳

如何保护古老的元素，要在观念上实现转变，复苏古老的知识和地方的核心精神，朝着“环境、文化多元性、和平”三个方面努力，去了解当地的优势，不再继续破坏自然环境。



香港M+博物馆设计和建筑策展人陈伯康主持本场座谈，座谈现场嘉宾们还围绕“生态、经济、政策、建筑”以及城市和乡村两者该如何的互动拉近，如何借由教育和建筑的结合等来为社会注入新的动力进行了探讨交流，并回答了现场观众提问。

结语·展望



为期3天的“浙江松阳·乡村振兴论坛”完成各项议程后闭幕。



柏林Aedes建筑论坛馆长汉斯·尤尔根·科莫瑞尔

对松阳为本次论坛的精心策划和组织表示感谢，他说，非常高兴能够体验和共同庆祝目前松阳所取得的一切，希望能够同松阳持续开展对话，共同推进乡村发展和振兴。■



会议期间，与会嘉宾进行了实地考察。



契约博物馆，欣赏山边马灯表演



豆腐工坊



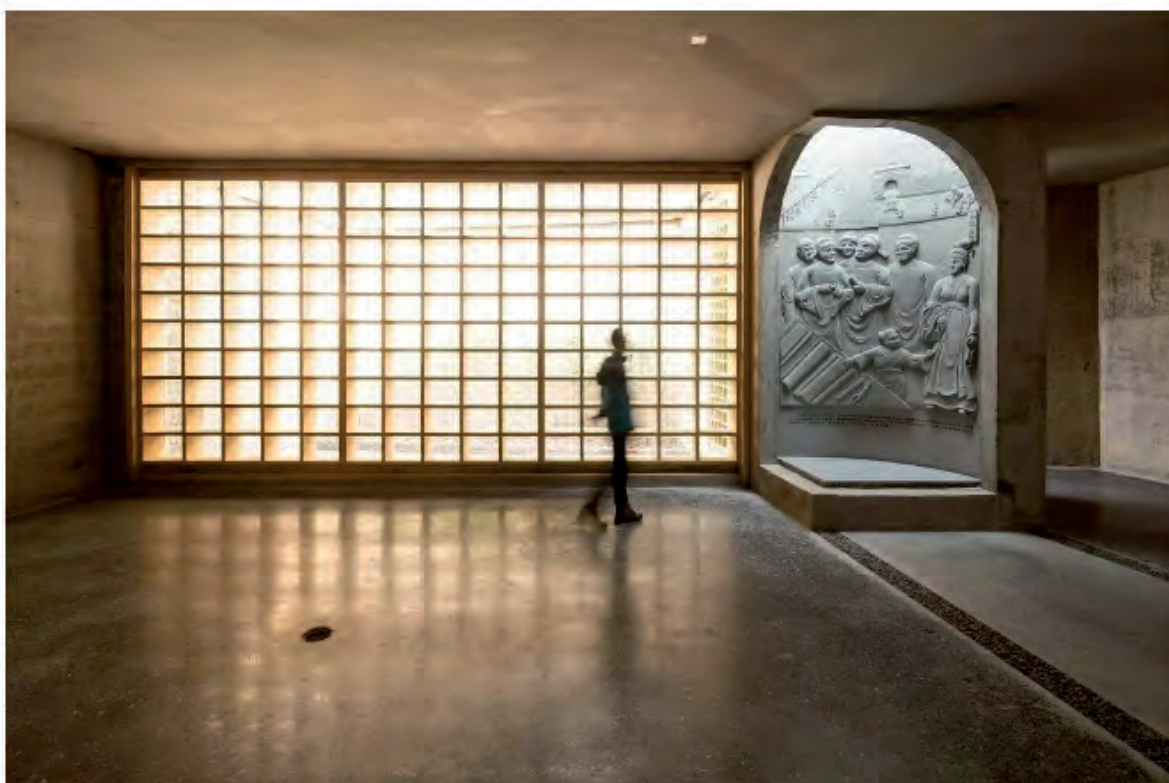
石仓古民居



红糖工坊



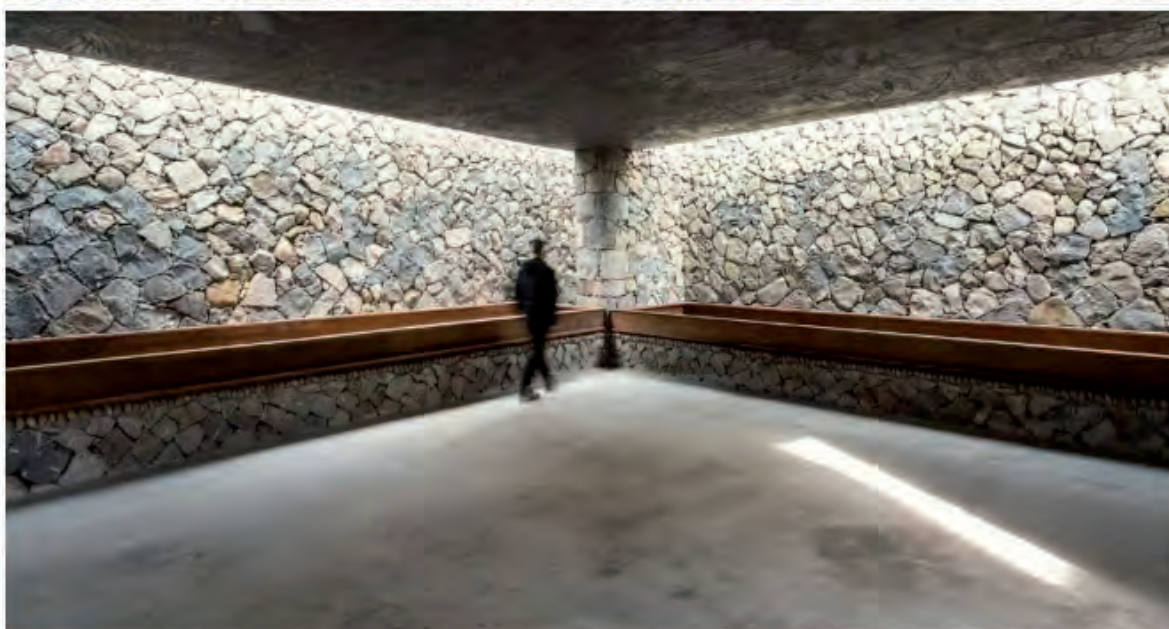
石门圩廊桥（摄影：王子凌）



王景纪念馆（摄影：王子凌）

松阳在乡村振兴中提倡“中医调理、针灸激活”，就是不希望对乡村进行大动干戈的建设，而是通过点位上的适度刺激，慢慢恢复其生命力。近几年的生动实践证明，在充分尊重当地传统、文化、产业和空间肌理的基础上，艺术建筑在乡村以微小的方式介入，提取和诠释各个村庄的特色文化、特色产业，形成一系列小而精、小而美、小而特的文化空间、生产空间，重现文化的力量和乡村的价值，给松阳乡村振兴带来了深刻的意义。

以石仓古契约研究成果为基础，以“契约精神”为灵感，以当地石材为主材，以传统技术建造的石仓契约博物馆，激发了人们对规则的尊重和敬畏，也为当地建筑遗产的修复创造了契机：三个砌石建筑专家把十几个年轻工人培养成了技艺娴熟的石工。如今，博物馆作为一个热门旅游景点，促进了附近村居的翻修，也吸引了外来资本投资，附近修建了鸣珂里文化民宿，带动了乡村旅游的发展。



石仓契约博物馆（摄影：王子凌）

除了契约博物馆，石仓周边的山头村新建了由建筑设计师徐甜甜设计的白老酒工坊，蔡宅村新建了豆腐工坊，更是带动了文化传承和经济发展。而随着白老酒和豆腐产业知名度和美誉度的提升，也带动了当地村民自发种植水稻和黄豆，推动了种植业和养殖业的发展。至此，通过富有生命力且带有地区特色的建筑针对性“把脉针灸”，赋予不同地域不同功能属性，进而带动了整个石仓片区系统性可持续性的乡村循环式发展，激活了片区活力。

不仅拥有契约博物馆、白老酒和豆腐工坊，在松阳乡村，还围绕松阴溪和8条艺术创造路线，分布着平田农耕馆、大木山竹亭、大木山茶室、红糖工坊、王景纪念馆，以及松阴溪沿途休闲驿站、水文公园、独山驿站等不同大小和功能的建筑，它们成为符合现代需求的多功能空间，是当地人文特色、生产生活形态的展示空间，当地居民和外来游客开展社交娱乐活动的公共文化空间，当地传统农特产品、传统手工展示售卖的发展空间。这些集功能性、艺术性、思想性于一体的建筑，成为引导一种业态发展、激活一个片区复兴的良好载体。

利用建筑凝聚人心，让百姓树立了文化自信、经济自信、产业自信，也让乡村建立了新自信。年轻一代受到政府相关政策的鼓励，开始从城市回流乡村，并通过他们的创意创新思维，对乡村的各类资源进行改造和利用，也带动了具有乡村特点的新型经济发展。■



图片来源：浙江·松阳乡村振兴论坛领导小组办公室



世界建筑 WORLD ARCHITECTURE

洞悉世界建筑设计思想
传播多元建筑文化争鸣

A Platform for Design Thinking Exchange
A Channel for Cross Cultural Debate

感谢关注WA世界建筑微信

微信平台：世界建筑 或 WA_magazine

官方网站：<http://www.wamp.com.cn/>

新浪微博：@世界建筑

豆瓣小站：世界建筑小站 <http://site.douban.com/wamp/>

杂志订阅：全国各地邮局 邮发代号2-191

办公电话：（010）62781318

通过杂志社购买《世界建筑》请关注世界建筑微信公众号，
并在下方工具栏点“订阅投稿”

微信读者群：公众号后台回复“读者”获取群二维码。

“Songyang Story” : A tale of rural revitalization of China

By Sun Liya and Gao Song | People's Daily app
10:00, November 28, 2018(GTM +8)

The "Songyang Story" was invited to participate at the symposium of The Biennale Architettura 2018 - "Meetings on Architecture" on November 24. Chinese architect Xu Tiantian participated in the theme pavilion exhibition with seven rural buildings in Songyang, expounding the story in the rural revitalization of China.



(Photo: People's Daily app)

During this panel, the forum guests discussed various topics on nature's free gifts of sunlight and moonlight, air, gravity, materials, natural and man-made resources within architecture.

In the keynote speech, Xu introduced her stories of Songyang over the past five years. With the method of "Architecture Acupuncture" and the principle of "Minimum Intervention", she analyzed the different humanistic historical life characteristics and economic structures of each village and followed the tradition of the village and nature to integrate the buildings and the nature humanities of the village. She proposed to change the status of architects in the process of rural construction, to look at rural construction from the perspective of doctors, and to diagnose our living environment and pathological problems in rural communities.



(Photo: People's Daily app)

Rafael Moneo, the internationally renowned architect of the Pritzker Architecture Prize, said that the changes brought about by the "Songyang Story" will allow more people able to stay and work in their hometowns. In the past, people were forced to stay away from home. In the future, more people will return to and stay in their hometowns, and contribute to the development of their hometown.

This year, the "Songyang Story" has been exhibited at the Aedes Architecture Forum and the Frankfurt Book Fair and will be present at the Swiss Architecture Museum and the Architekturzentrum Wien.

(Compiled by Wang Xiangyu)

Mit Architektur gegen Abwanderung in China

MAIK NOVOTNY

2. Dezember 2018, 08:00



foto: zhou ruogu
Neues Leben in alten Dörfern: eine
Zuckerrohrfabrik, ...



foto: wang ziling
... ein Bambuspavillon, ...



foto: wang ziling
... ein Teepavillon ...

Die chinesische Region Songyang versucht, die Abwanderung zu stoppen. Auf den Dörfern sucht ein radikal urbanisiertes Land seine verlorene Seele

Über Songyang lässt sich eine Fülle von Geschichten erzählen. Zum Beispiel die Geschichte einer kleinen Stadt in der Provinz Zhejiang, 460 Kilometer südlich von Schanghai, inmitten einer Landschaft aus breiten Flüssen, schroffen Felsen und Teefeldern im Morgennebel, in ganz China bekannt für seine pittoreske Schönheit. Die Geschichte von rund 400 Dörfern, in denen nur noch Alte und Kinder leben oder die schon ganz entvölkert sind. Die Schattenseite der globalen Verstädterung, die sich in China besonders rapide entwickelte. Im Jahr 2016 lebten bereits 773 Millionen Chinesen in Städten und 589 Millionen auf dem Land.

Songyang ist auch die Geschichte eines Lokalpolitikers, der diesen Trend aufhalten will: Wang Jun, ein junger, ehrgeiziger und intelligenter Parteisekretär, der seine Heimat als "den letzten geheimen Garten" bezeichnet und mit einer Rückbesinnung auf regionale Werte die verschlafene Landschaft wieder zum Leben erwecken möchte – um den Bevölkerungsschwund aufzuhalten und mit sanftem Tourismus die Wirtschaft wieder anzukurbeln.

Seine Geschichte ist eng verzahnt mit der von Xu Tiantian, die in Peking ihr Büro DnA Design and Architecture führt. 2015 fand sie eher zufällig den Weg ins abgelegene Songyang. Seitdem hat sie eine Vielzahl von Bauten in der Region realisiert. Eine kleine Fabrik zur Zuckeraufbereitung im Dorf Xing, das Gemeinschaftshaus im Dorf Pingtian, ein Teehaus, einen Bambuspavillon, ein Museum für die Kultur des Hakka-Volks im Dorf Shicang und eine Brücke über den Songyin-Fluss zwischen den Dörfern Shimen und Shimenyu. Geplant und gebaut gemeinsam mit der – zuerst noch skeptischen – Bevölkerung und mit lokalen Handwerkern.

Regionales Bauen

Eine Architektur, die das Bestehende nicht in Grund und Boden plant, sondern wie Akupunktur funktioniert. Eine Art des regionalen Bauens, die selten ist in einem Land, in dem Bautraditionen meist in Form von disneyfizierten Karikaturen reproduziert werden. Eine Wiederentdeckung von Materialien und Techniken, wie sie auch Pritzker-Preisträger Wang Shu praktiziert. Archaisch ging es auf der Baustelle jedoch keineswegs zu, erklärt Xu Tiantian. Da die



foto: wang ziling

... und eine restaurierte Brücke in der Region Songyang.

junge Mutter nicht ständig aus Peking anreisen konnte, wurde die Bauleitung mit der in China omnipräsenten App Wechat erledigt. "Die Bauern haben alle Smartphones, das hat sehr gut funktioniert," sagt sie.

Die Geschichte von Songyang – das ist auch "Rural Moves – The Songyang Story", der Titel einer Ausstellung, die im Frühjahr im Aedes-Architekturforum Berlin zu sehen war. Dort wurden die Bauten von Xu Tiantian erstmals im Westen präsentiert, kurz darauf waren sie auf der Architekturbiennale Venedig zu sehen, im Frühjahr 2019 macht die Ausstellung im Architekturzentrum Wien (Az W) Station. "Die Stadt ist ohne das Land nicht diskutierbar", so Aedes-Direktorin Kristin Feireiss. "Das Land wurde viel zu lang als reine Ressource für die Stadt gesehen. Das ändert sich – wir beobachten heute weltweit ein neues ländliches Selbstvertrauen."

Also beschloss man, sich just in Songyang mit weltweiten Experten über diesen Versuch eines neuen Gleichgewichts auszutauschen. Anfang November luden Aedes und die Region Songyang zur dreitägigen Konferenz "Regions on the Rise." Auch Vertreter der Regierung waren zugegen – in Peking beobachtet man das Experiment von Wang Jun mit erhöhter Aufmerksamkeit.

Herz der Kultur

Denn die Geschichte von Songyang ist auch die Geschichte eines Landes, das nach Jahrzehnten eines wilden Wachstumsrausches die Ahnung befällt, dass es seine Seele verloren hat. "Die alten Dörfer sind das Herz der chinesischen Kultur", bekräftigte der Parteifunktionär Liu Yuzhu. Deswegen habe die Regierung Initiativen gestartet, um diese Dörfer zu schützen, bis Oktober 2018 seien 1,3 Milliarden Yuan in dieses Strukturprogramm für den ländlichen Raum investiert worden.

Der Wunsch nach emotionaler Bindung an die eigene Identität paart sich mit harten Fakten: Chinas Flächen für landwirtschaftliche Produktion sind durch die Urbanisierung an einem kritischen Minimum angelangt – es geht schlicht ums wirtschaftliche Überleben. Also hofft man, das Erfolgsmodell Songyang als Prototyp reproduzieren zu können.

Ein Wunsch, der auf der Konferenz auf Skepsis traf. Songyang sei mit seiner noch relativ unberührten Landschaft und den Bauern, die am überregional berühmten grünen Tee gut verdienen, ein privilegierter Sonderfall, urteilten Wirtschaftsprofessoren und Architekten. Ins ostchinesische Flachland mit seinen Autobahnen, Tierfabriken und verseuchten Böden und Gewässern wird sich nie ein Tourist verirren.

Warten auf Touristen

Wird die Geschichte von Songyang eine Erfolgsstory? Alles deutet darauf hin. In den sorgfältig restaurierten Gassen der Altstadt warten die ersten Vintage-Läden und gediegenen Edelteeshops auf zahlungskräftige Touristen. In den Dörfern eröffnen findige Kleinunternehmer die ersten Ferienhäuser in alten Gemäuern. Die neue Autobahn nach Songyang ist schon fertig, die Hochgeschwindigkeitsbahnstrecke ist in Bau, ein Regionalflughafen ebenfalls.

Epilog: ein Samstagabend in der Zehn-Millionen-Stadt Hangzhou, drei Stunden nördlich von Songyang. Tausende von schick gekleideten Jungzwanzigern strömen durch die Straßen zwischen den Flagship-Stores von Gucci, **Apple**, Adidas und Versace, Einkaufstaschen in beiden Händen. Ob sich Chinas konsumfreudige Jugend dauerhaft wieder zurück aufs Dorf locken lässt? Eine Geschichte mit offenem Ende. (Maik Novotny, 2.12.2018)

Die Reise nach China erfolgte auf Einladung von Aedes und der Regionalregierung Songyang.



Songyang-Regions on the Rise

Songyang-Regions on the Rise Conference
8-10. November 2018

Rethinking strategies for new rural developments is a pressing global challenge today. Dynamic urbanization processes shape large areas of the world – and China in particular – while the hinterland has long been a subject of neglect. To stimulate an international discussion, Aedes Architecture Forum Berlin presented the exhibition 'Rural Moves – The Songyang Story' this year, which led to the initiation of the conference 'Regions on the Rise – Culture and Architecture as Drivers for Rural Development' in Songyang County, China. The focus lies on the dualities and interrelations occurring in the relationship between the urban and the rural, always seeking to explore what culture and architecture can do in interplay with economy, spatial planning, infrastructure and ecology. This development might establish new concepts and therefore a new rural condence and identity as well as economic progress and reliability as major incentives to make people stay or even return into the hinterland.

国际会议
文化与建筑—乡村发展的驱动力

International Conference
**Culture and
Architecture as
Drivers for Rural
Development**

8 - 10 November 2018
Songyang County, China

Words of Welcome and Introduction

Xiang Zhaolun Minister for Culture at the Central Government, Beijing, China
Kristin Feireiss Director Aedes Architecture Forum and Network Campus Berlin, Germany
Hu Haifeng Mayor of Lishui City, China

Key Lecture

Remy Sietchiping Leader, Regional and Metropolitan Planning, UN-HABITAT, Nairobi, Kenya

Introduction

Wang Jun Magistrate Songyang County, China
Hans-Jürgen Commerell Director Aedes Architecture Forum and Network Campus Berlin, Germany
Xu Tiantian Architect, Beijing, China
Eduard Kögel Architecture Historian, Berlin, Germany

Ten by Ten Impulse Statements

Experts from various elds and different countries report on their research and experiences on rural development made in their speci c region or institution.

1. Zhang Ke Founding Principal,
ZAO/standardarchitecture 标准营造, Beijing, China, Harvard University Graduate School of Design, Cambridge, USA

2. Angel Luis Fernandez Head of Research
Center for Urban Design, ESNE. School of
Design, Innovation and Technology, Madrid,
Spain
3. Zhang Lei Professor, Founder & Chief
Architect, Nanjing University, AZL architects,
Nanjing, China
4. Angelika Fitz Director, Austrian Architecture
Museum, Vienna, Austria
5. Miriam Mlecek Researcher, formerly Leibniz
University Hanover / ANCB
Programme Manager, Berlin, Germany
6. Zhang Yue Professor, Tsinghua University,
Beijing, China
7. Nuria Costa Leonardo Mexican Women's
Network, Civic Society, Morelos,
Mexico
8. Huang Yung Sung Art Director, Han Sheng
Magazine, Taiwan
9. Adrian Iredale Director, Iredale Pedersen Hook
Architects, Perth, Australia
10. Zhu Jingxiang Professor, Hong Kong
University, China

Panel ONE: Culture + Architecture

Moderator: Andreas Ruby Director, Swiss
Architecture Museum, Basel, Switzerland
Li Xiangning Professor, Tongji University, Curator
Chinese Pavilion at the Venice Biennale 2018,
Shanghai, China

Hitoshi Abe Architecture and Urban Design Chair,
UCLA, Los Angeles, USA, Atelier Hitoshi Abe,
Sendai, Japan
Farrokh Derakhshani Director, Aga Khan Award
for Architecture, Geneva, Switzerland

**Panel TWO: Ecology and Economy +
Architecture**

Moderator: Aric Chen Curator-at-large, M+, Hong
Kong
Liu Shouying Economist, China
Erhard An-He Kinzelbach, Professor, Founder
KNOWSPACE, Berlin, Germany
Juan Mayr, Foreign Office, Bogotá, Colombia
Lina Annab, Minister of Tourism and Antiquities,
Amman, Jordan

CATEGORY

Vorträge / Events

TAGS

Rural China, Songyang, Xu Tiantian



Rural moves – The Songyan story

The Theme

Rethinking strategies for rural development is a critical global issue today. Dynamic urbanization processes shape large areas of the world, while the revitalization of rural regions has been neglected for a long time. This has consequently given rise to pressing socio-economic and political challenges all over the world. To stimulate an international discussion, Aedes Architecture Forum Berlin presented the exhibition Rural Moves – The Songyang Story this year, which led to the initiation of this conference. The focus will be on the duality and interrelations between the urban and the rural, seeking to explore what culture and architecture can contribute to rural renewal in interplay with economy, spatial planning, infrastructure, and ecology. The goal of this international knowledge exchange of holistic strategies and best practice examples is to discuss new concepts, which might ultimately establish a new rural confidence and identity as well as economic progress and reliability as major incentives to make people stay in or even return to the “hinterland”.

The conference

The conference invites policymakers, architects, planners, researchers, economists, curators and related professionals to the successful case study area of Songyang to share and archive experiences, strategies and new ideas for the development of the ‘global rural region’ of the future. This region in the southwest of Shanghai became a pioneer in the sensitive redevelopment of rural areas by implementing carefully balanced “architectural acupuncture”.

Against this backdrop, the conference is structured around three main sessions complemented by excursions into the region to illustrate the topic and to offer opportunities for exchange: (i) a cluster of ten impulse statements to boost the conference with a wide range of positions by stakeholders from the various fields of practice and research in the rural context, panel discussions on (ii) “Culture + Architecture” and (iii) “Ecology and Economy + Architecture”.

The contributions and results of the conference will be compiled in a publication and in the Aedes online archive to deepen and expand the international discussion on the redevelopment of rural regions and to make the content accessible for those not able to follow the event in person.



ARTIKEL

Akupunktur für das Land

[derStandard.at](#)

Die chinesische Region Songyang versucht, mithilfe von Architektur die Abwanderung in die Städte zu stoppen. Auf den Dörfern sucht ein radikal urbanisiertes Land seine verlorene Seele.

01. Dezember 2018 - [Maik Novotny](#)

Über Songyang lässt sich eine Fülle von Geschichten erzählen. Zum Beispiel die Geschichte einer kleinen Stadt in der Provinz Zhejiang, 460 Kilometer südlich von Schanghai, inmitten einer Landschaft aus breiten Flüssen, schroffen Felsen und Teefeldern im Morgennebel, in ganz China bekannt für seine pittoreske Schönheit. Die Geschichte von rund 400 Dörfern, in denen nur noch Alte und Kinder leben oder die schon ganz entvölkert sind. Die Schattenseite der globalen Verstädterung, die sich in China besonders rapide entwickelte. Im Jahr 2016 lebten bereits 773 Millionen Chinesen in Städten und 589 Millionen auf dem Land.

Songyang ist auch die Geschichte eines Lokalpolitikers, der diesen Trend aufhalten will: Wang Jun, ein junger, ehrgeiziger und intelligenter Parteisekretär, der seine Heimat als „den letzten geheimen Garten“ bezeichnet und mit einer Rückbesinnung auf regionale Werte die verschlafene Landschaft wieder zum Leben erwecken möchte – um den Bevölkerungsschwund aufzuhalten und mit sanftem Tourismus die Wirtschaft wieder anzukurbeln.

Seine Geschichte ist eng verzahnt mit der von Xu Tiantian, die in Peking ihr Büro DnA Design and Architecture führt. 2015 fand sie eher zufällig den Weg ins abgelegene Songyang. Seitdem hat sie eine Vielzahl von Bauten in der Region realisiert. Eine kleine Fabrik zur Zuckeraufbereitung im Dorf Xing, das Gemeinschaftshaus im Dorf Pingtian, ein Teehaus, einen Bambuspavillon, ein Museum für die Kultur des Hakka-Volks im Dorf Shicang und eine Brücke über den Songyin-Fluss zwischen den Dörfern Shimen und Shimenyu. Geplant und gebaut gemeinsam mit der – zuerst noch skeptischen – Bevölkerung und mit lokalen Handwerkern.

Eine Architektur, die das Bestehende nicht in Grund und Boden plant, sondern wie Akupunktur funktioniert. Eine Art des regionalen Bauens, die selten ist in einem Land, in dem Bautraditionen meist in Form von disneyfizierten Karikaturen reproduziert werden. Eine Wiederentdeckung von Materialien und Techniken, wie sie auch Pritzker-Preisträger Wang Shu praktiziert. Archaisch ging es auf der Baustelle jedoch keineswegs zu, erklärt Xu Tiantian. Da die junge Mutter nicht ständig aus Peking anreisen konnte, wurde die Bauleitung mit der in China omnipräsenten App Wechat erledigt. „Die Bauern haben alle Smartphones, das hat sehr gut funktioniert,“ sagt sie.

Die Geschichte von Songyang – das ist auch Rural Moves – The Songyang Story, der Titel einer Ausstellung, die im Frühjahr im Aedes-Architekturforum Berlin zu sehen war. Dort wurden die Bauten von Xu Tiantian erstmals im Westen präsentiert, kurz darauf waren sie auf der Architekturbiennale Venedig zu sehen, im Frühjahr 2019 macht die Ausstellung im Architekturzentrum Wien (Az W) Station. „Die Stadt ist ohne das Land nicht diskutierbar“, so Aedes-Direktorin Kristin Feireiss. „Das Land wurde viel zu lang als reine Ressource für die Stadt gesehen. Das ändert sich – wir beobachten heute weltweit ein neues ländliches Selbstvertrauen.“

Also beschloss man, sich just in Songyang mit weltweiten Experten über diesen Versuch eines neuen Gleichgewichts auszutauschen. Anfang November luden Aedes und die Region Songyang zur dreitägigen Konferenz „Regions on the Rise.“ Auch Vertreter der Regierung waren zugegen – in Peking beobachtet man das Experiment von Wang Jun mit erhöhter Aufmerksamkeit.

Herz der Kultur

Denn die Geschichte von Songyang ist auch die Geschichte eines Landes, das nach Jahrzehnten eines wilden Wachstumsrausches die Ahnung befällt, dass es seine Seele verloren hat. „Die alten Dörfer sind das Herz der chinesischen Kultur“, bekräftigte der Parteifunktionär Liu Yuzhu. Deswegen habe die Regierung Initiativen gestartet, um diese Dörfer zu schützen, bis Oktober 2018 seien 1,3 Milliarden Yuan in dieses Strukturprogramm für den ländlichen Raum investiert worden.

Der Wunsch nach emotionaler Bindung an die eigene Identität paart sich mit harten Fakten: Chinas Flächen für landwirtschaftliche Produktion sind durch die Urbanisierung an einem kritischen Minimum angelangt – es geht schlicht ums wirtschaftliche Überleben. Also hofft man, das Erfolgsmodell Songyang als Prototyp reproduzieren zu können.

Ein Wunsch, der auf der Konferenz auf Skepsis traf. Songyang sei mit seiner noch relativ unberührten Landschaft und den Bauern, die am überregional berühmten grünen Tee gut verdienen, ein privilegierter Sonderfall, urteilten Wirtschaftsprofessoren und Architekten. Ins ostchinesische Flachland mit seinen Autobahnen, Tierfabriken und verseuchten Böden und Gewässern wird sich nie ein Tourist verirren.

Wird die Geschichte von Songyang eine Erfolgsstory? Alles deutet darauf hin. In den sorgfältig restaurierten Gassen der Altstadt warten die ersten Vintageläden und gediegenen Edelteeshops auf zahlungskräftige Touristen. In den Dörfern eröffnen findige Kleinunternehmer die ersten Ferienhäuser in alten Gemäuern. Die neue Autobahn nach Songyang ist schon fertig, die Hochgeschwindigkeitsbahnstrecke ist in Bau, ein Regionalflughafen ebenfalls.

Epilog: ein Samstagabend in der Zehn-Millionen-Stadt Hangzhou, drei Stunden nördlich von Songyang. Tausende von schick gekleideten Jungzwanzigern strömen durch die Straßen zwischen den Flagship-Stores von Gucci, Apple, Adidas und Versace, Einkaufstaschen in beiden Händen. Ob sich Chinas konsumfreudige Jugend dauerhaft wieder zurück aufs Dorf locken lässt? Eine Geschichte mit offenem Ende.

[Die Reise nach China erfolgte auf Einladung von Aedes und der Regionalregierung Songyang.]

Regions on the Rise: Culture and Architecture as Drivers for Rural Development - a Review

ZHANG Zhen, November 2018



Closing of the symposium with the architect XU Tiantian receiving a flower from Aedes © Zhen Zhang

During the three-day symposium – organized by Aedes Architecture Forum Berlin, Songyang County Government & Aedes Network Campus Berlin – that took place from November, 8th to 10th 2018, international experts gathered in Songyang county in Zhejiang Province in China to discuss and share experiences on the topic of „global rural region“ as well as visiting the projects and examples designed by architect XU Tiantian, who implemented more than ten projects in Songyang with the idea of „architectural acupuncture“.

Altogether 56 international guests and 143 guests from China attended the conference including 28 invited speakers. The conference took a 360-degree approach, in which speakers from various professions were invited, including politicians, architects, economists, policy makers in cultural heritage and tourism, university professors, directors of museums and foundations, as well as international policy makers, practitioners and coordinators. The conference took place in the town centre of Songyang. The main venue was the Tanglan Guild Hall that used to be a Guanyu Temple, with a branch venue at the Wood Club, which was facilitated with a screen for a synchronized broadcasting. Due to the dense conference schedule, there was little time left for question-and-answer sessions, open discussions or a more direct interaction with and hearing of the local residents.

At the opening of the symposium, following words of welcome from the magistrate Mr. LI Hanqin and the party secretary Mr. WANG Jun as the hosts from Songyang, Ms. Kristin Feireiss, director of Aedes Architecture Forum Berlin as initiator of the event, reflected on the gallery's constant efforts since the 1990s to introduce the architecture scene in China, emphasized the role of architecture in "the transformation process of society" and suggested seeing „rural region as a global issue“.

Dr. Remy Sietchiping, leader of regional and metropolitan planning at UN-HABITAT in Kenya, gave a keynote speech, in which he pointed out that the disparity of urban and rural household incomes has risen to ever new highs ever since the 1990s. He mentioned the importance of "balanced territorial development" in the process of urbanization as well as the importance of "strategy and program" in the transformation



ZHANG Zhen

Als Kuratorin der Ausstellung "Planetary Urbanism – the Transformative Power of Cities" im Deutschen Pavillon hat sie an der UN-Habitat III Konferenz in Quito, Ecuador, teilgenommen. Für ihrer Masterarbeit „Isle of Islay – Nature Observatory – Remembrance of a Forgotten Treaty between Man and Nature“ hat sie die besondere Auszeichnung zum BDA-SARP-Award erhalten und wurde für den Euregional Preis (EAP) nominiert. 2011-2013 war sie als Architektin bei von Gerkan, Marg und Partner Shanghai tätig. Als Architektin und internationale Projektkoordinatorin hat sie das Deutsch-Chinesische Haus auf der Weltausstellung 2010 in Shanghai mitrealisiert.

Kontakt:

› zhen.zhang@rwth-aachen.de

process. He raised the problem in the urbanization process in China that the cities are absorbing the villages while the villages grow bigger and saw new opportunities in the booming E-Commerce in China. He also gave a review of the four stages of the urban-rural linkage in China. From 1949-1977, labour mobility was strictly controlled and the rural sector subsidized the urban sector, leading to a policy-forced urban-rural cleavage. Between 1978 and 2000, due to the reform policy started in 1978, the urban-rural interface became market driven; cheap rural labour flooded into cities for jobs but gained little access to urban services due to the hukou (户口) constraints. The years between 2001 and 2012 saw a land-driven urban-rural tension, where rural land was rapidly converted into urban use on a large scale through state expropriation. From 2013 onwards, an urban-rural integration policy was attempted and welfare improvements for the rural population and migrant workers came into focus, including the discussion of the hukou-system and taxation reform with the proposal to introduce a property tax; especially since 2014, China's leadership has outlined a new form of urbanization that calls for a balanced development with a focus on urban-rural coordination. Dr. Sietchiping emphasized the importance of the protection of cultural and national heritage and supported the idea of „good tourism“. As an outlook, a global partnership for urban-rural linkage and the set-up of international guidelines on urban and territorial planning were seen as a recent trend. In terms of guidelines, he mentioned in another interview the UN approach in international collaboration to avoid speaking of „DON'Ts“ but to say „We suggest“ instead.

On November 9th, during the introduction speeches, Mr. Hans-Jürgen Commerell, director of Aedes Network Campus Berlin, told the story how Aedes got introduced to Songyang through the architect ZHANG Ke; the architect XU Tiantian talked about the role of architects and spoke of the economic, social and natural aspects of sustainability; Dr. Eduard Kögel, curator of Aedes Berlin, spoke of the phenomenon of growing centres and shrinking regions and the challenge of the increasing loss of diversity, with the suggestion to focus on the regional context. The chairman of the China Cultural Relics Protection Foundation, Mr. Li Xiaojie, introduced the „Rescue Old House Action“, through which 142 old houses got renovated through a joint funding of the government and the property owners. He expressed his hope that the Songyang story will set an example for and be introduced to more than 2,000 similar counties all over China. The party secretary and director of the State Administration of Cultural Heritage, Mr. LIU Yuzhu, suggested extending the categories of cultural heritage further to support private properties and relics of lower protection value. He also mentioned the advantages of such renovation projects: they can be done at lower costs since they are not subjected to a tendering process and they moreover help to train local craftsmen. He also supported reactivating properties of cultural heritage with new usage concepts.

Ten practitioners from all over the world including well-known award winning Chinese architects were invited to give short talks in the format of so-called ten by ten impulse statements with a short overview of their own practices. Mr. ZHANG Ke presented his renovation concept focusing on materiality, for example by mixing Chinese ink into concrete to create a special texture. At the end of his speech he touched on the problem of decreasing arable land, suggesting to increase central density to save land for agriculture. Mr. ZHANG Lei emphasized a different relationship between the architect and client in the countryside, namely as co-operators. Mr. ZHU Jingxiang showed his projects of lightweight fast-build assembly architecture with an adjustable modular strategy to suit various climate and geographical environments, as solutions for quick after-crisis reconstruction and for poor remote regions. Prof. Hitoshi Abe spoke of Japanese concepts such as „domestic urbanism“ and his experiences with wholesale districts and warehouse events. From the perspective of a museum director, Ms. Angelika Fitz from the Austrian Architecture Museum in Vienna spoke of the idea of using architecture to create centers. She suggested switching from the concept of „participation“ to „co-production“ and mentioned the Austrian approach to „care and repair“ the built environment taking into consideration critical concept-duos of „ecology and

economy", „bottom-up and top-down" and „local and global". Mr. Farrokh Derakhshani, director of the Aga Khan Award for Architecture raised the question of how to define „the rural". He emphasized the importance of showing good examples and talked about five criteria: continuing traditional methods, elaborating local know-how, enabling participation and self-reliance, making replicable models and creating institutions as models.

The director of the Swiss Architecture Museum in Basel, Andreas Ruby, moderated a panel discussion with the theme of „ Culture and Architecture" and raised the question whether culture is a term that rather belongs to the cities, whether rural areas will become so successful with the „Bilbao Effect" that they actually become cities, and what would the prototyping of a successful Songyang story mean to Chinese cities. He reflected on the two visions of urbanization modes: either generating more concentrated density or a decentralized total urbanization; through these questions he suggested envisioning and foreseeing possible consequences for the cities as the countryside increasingly becomes the development focus: "What about workdays in the countryside, weekends in the city", he asked. At the panel discussion, Hitoshi Abe spoke for facilities and programs for the young generation to take up rural lives in the countryside; Farrokh Derakhshani saw the value in rural development in how to give more choices to people to choose the way they want to live; LI Xiangning, curator of the Chinese Pavilion at the Venice Biennale 2018, doubted that the Songyang story will become a prototype for rural development. According to him, it depends very much on the architect and even more on the politicians. In a later interview he also differentiated two types of rural areas – those like Songyang which have an obvious development advantage with cultural heritage and agricultural specialties, and those which are extremely remote and poor and lack resources.

The program on November 10th focused on the topic of „Ecology, Economy and Architecture". Prof. LIU Shouying from the School of Economics of Renmin University of China spoke of the problem that the hinterland in China tended to imitate the urban and coastal development modes through intensive construction activities which has led to the phenomenon of "ghost cities". He reviewed the industrialization process since the 1950s and suggested reforms and a redefinition of agriculture and a revitalization of the peasants as citizens. In the panel discussion moderated by Mr. Aric Chen from Hongkong, Prof. LIU emphasized the importance to integrate the inherent texture and logic of the countryside with elements from the urban outside; he placed „replicable models" and specific approaches against each other and generally doubted the replicability of models. Instead, he favours the examination of diverse and basic conditions and suggested a clear division of the boundary between policy and market. During the panel discussion, Prof. Erhard An-He Kinzelbach from Bochum University of Applied Sciences suggested focusing on both the hardware and the software of development in providing solutions of contemporary dwelling. Nuria Costa Leonardo from the Mexican Women's Network also argued for a more integrated and more thorough approach to look at infrastructures and ecological systems concerning practical issues like water preservation, recycling, pollution reduction etc., instead of solely focusing on restoring building structures. A similar view was expressed by Juan Mayr Maldonado, National Commission for Conciliation from Colombia, who gave an introduction to the case in Colombia where land for indigenous people was recovered in the 1980s, suggesting to regard buildings not as isolated bodies but as a system. He added the spiritual level to the current discussion on environmental, social and economical levels, compared the differences of lowland and highland areas and asked questions such as: what is the soul of the buildings, what is architecture of culture with the focus on identities, and what is architecture of nature?

Beside the speeches and panel discussions, excursions to the various building sites were organized, including several projects designed by the architect XU Tiantian. With her concept of "architectural acupuncture", she tried to find a special topic for

each individual village and designed buildings that embody exactly these topics, providing various solutions in various cases. The Brown Sugar Factory for example has become a place to showcase the local traditional production of brown sugar in Xing Village. It helps to raise the peasants' revenues through tourism while providing a place for community activities at production-free seasons. A similar approach to showcase local products is seen at the Tofu workshop where Tofu is produced in front of visitors' eyes. The Indenture Museum explores the material „stone“. Due to the anticipated popularity of the museum, places for homestay, workshops and restaurants in the adjacent areas are provided for tourists.

The buildings are said to be built with a low budget and were created through a collaboration between the architect and the local government, interacting with and persuading the local community. The designed buildings have become tourism attractions and through their popularity, the surrounding areas have received an impulse to develop tourism infrastructure. In this manner, old houses are renovated with a foreseeable economic pay back and in turn help foster the continuity of local craftsmanship.

Further information:

- › Notes on a Dream Trip to Songyang (PDF)
- › Website of the Symposium
- › La Biennale di Venezia
- › Aedes Architecture Forum Berlin: Rural Moves - The Songyang Story
- › Report on the conference (Chinese): 浙江松阳·乡村振兴论坛：“文化与建筑——乡村发展的驱动力”



Pabellón de bambú en el área de Damishan./ZHOU RUOGU

De cómo la **arquitectura** puede **salvar** las **zonas rurales**

La migración de millones de habitantes de China a las ciudades para trabajar originó el abandono de numerosos pueblos, pero el condado de Songyang se ha convertido en un ejemplo de modelo de renacimiento rural a seguir.

Textos: **Dulce Xerach**
(Doctora en Arquitectura.
Profesora de la Universidad
Europea de Canarias)
Fotos: **cedidas**

Cuando Deng Xiaoping abrió China al mundo en la década de 1970, también estimuló la migración de más de la mitad de los 1.400 millones de habitantes de China a las ciudades para trabajar. En Shanghai y Pekín, las grandes constructoras están edificando frenéticamente rascacielos con letreros brillantes y grandes marcas occidentales centelleando por todos lados, para fascinación de los chinos.

Al mismo tiempo, existe la sensación de que la China “real”, la china del campo, está desapareciendo rápidamente y debe salvarse de ser un simple entretenimiento turístico, un Disneyland sin alma, como está ocurriendo en muchas de las ciudades y pueblos de China (y de por aquí, pues también en Occidente ocurre esto) en nombre del turismo mal entendido.

Si llegas a Shanghai y tienes ganas de descubrir algo de China que no se suele enseñar a los turistas, en dirección suroeste, tras un viaje de siete horas en coche llegarás al condado de Songyang. Se compone de unos 400 pueblos, desde Shicang hasta Damushan. Pueblos que se estaban abandonando, como ha ocurrido también aquí en España, donde más de 4.000 municipios están en riesgo de quedarse sin habitantes.



Fábrica de azúcar morena en la villa de Xing./WANG ZILING

Allí, en Songyang, el movimiento serpenteante del río Songyin une las ondulantes terrazas verdes del valle que se abrazan al borde del agua. Si sigues

el río encontrarás muestras de lo que el gobierno chino, con la ayuda de algunos arquitectos, especialmente la arquitecta Xu Tian Tian, está consiguiendo. Pri-



Taller de tinte en la villa de Pingtian.

mero encontrarás una fábrica de azúcar marrón; más adelante un teatro de bambú; y en el otro lado del río, un Museo Hakka de piedra construido con métodos

tan antiguos que incluso los albañiles de la ciudad tuvieron que aprender estas formas por primera vez, como si fueran métodos revolucionarios.

Ejemplo de renacimiento

El condado de Songyang, conocido misteriosamente como “La última tierra oculta en Jiangnan”, parece desde lejos una pintura tradicional china con rocas escarpadas, arrozales y plantaciones de té, pero en realidad se ha convertido en un ejemplo de modelo de renacimiento rural a seguir. La inteligente arquitecta Xu Tiantian, de la firma DnA, ha pasado años estudiando las aldeas de Songyang, hablando con residentes y creando lo que llama “acupunturas arquitectónicas”, que son edificios de los más interesantes que se están diseñando en China en la ac-

tualidad. La historia de Xu Tiantian es interesante porque ha logrado inspirar una especie de autoconfianza rural y de convertir las actitudes provinciales hacia los forasteros en brazos abiertos a través de su arquitectura. Ella explica cómo lo hizo y por qué esto es importante para China en la exposición “Rural Moves: The Songyang Story”, que se pudo disfrutar gracias a AEDDES en Berlín entre marzo y junio de 2018.

Especialmente me encanta su proyecto en la pequeña villa de Pingtian, situada en la cresta de una montaña donde pequeñas casas de

madera tradicional están agrupadas orgánicamente a lo largo de la topografía y se puede acceder a ellas a pie por medio de escaleras y callejones muy estrechos. Allí, además de convencer a los aldeanos, la arquitecta conectó dos casas idénticas a través de un tragaluz para formar un taller de tinte. El proyecto dio prioridad al diseño cultural, ecológico y armonioso sin comprometer la calidad de la construcción. Manteniendo intacta la estética vernácula, el diseño se camufla dentro del centro del pueblo, accesible por medio de estrechos callejones y escaleras. A ello sumaron

la creación de diversas habitaciones para alquilar a turistas, que regentan los aldeanos, únicos beneficiarios económicos (lo que aquí se desprecia por los grandes imperios turísticos como alquiler vacacional).

Durante miles de años, los principios fundamentales del diseño chino se construyeron sobre el feng shui y el uso de elementos naturales como la arcilla y la madera. Xu Tian Tian siguió la tradición, pues la historia de cómo se construyeron las estructuras en cada pueblo era demasiado única para ser borrada.