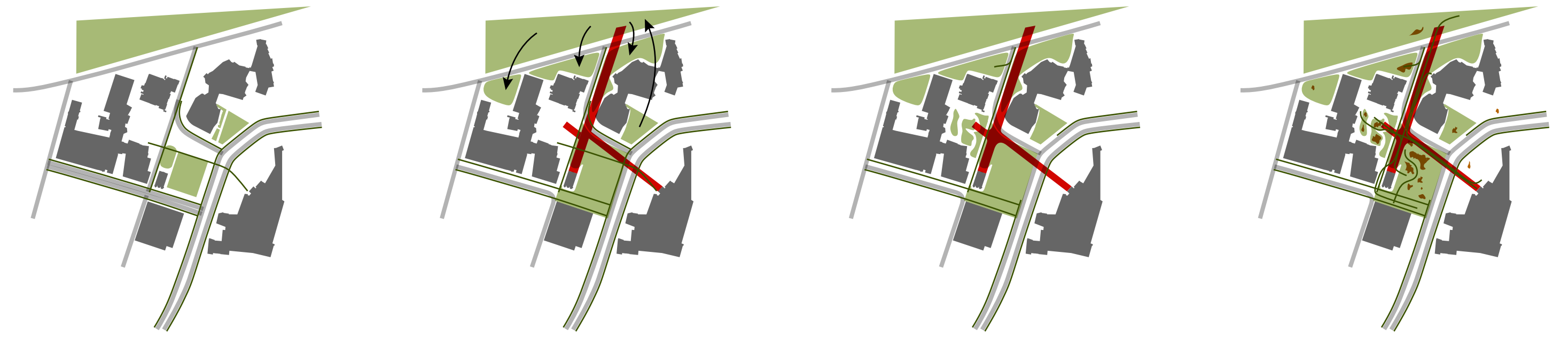


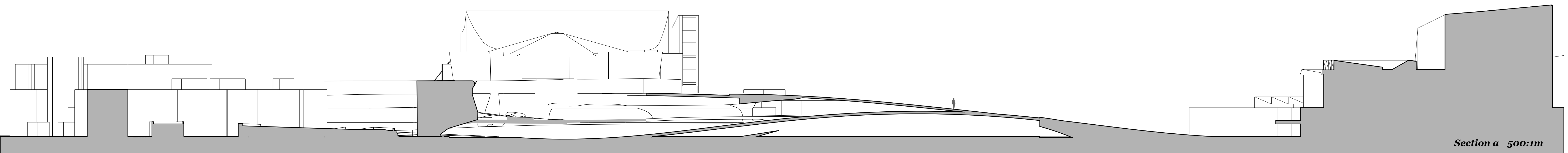
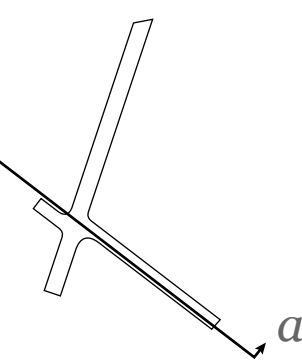
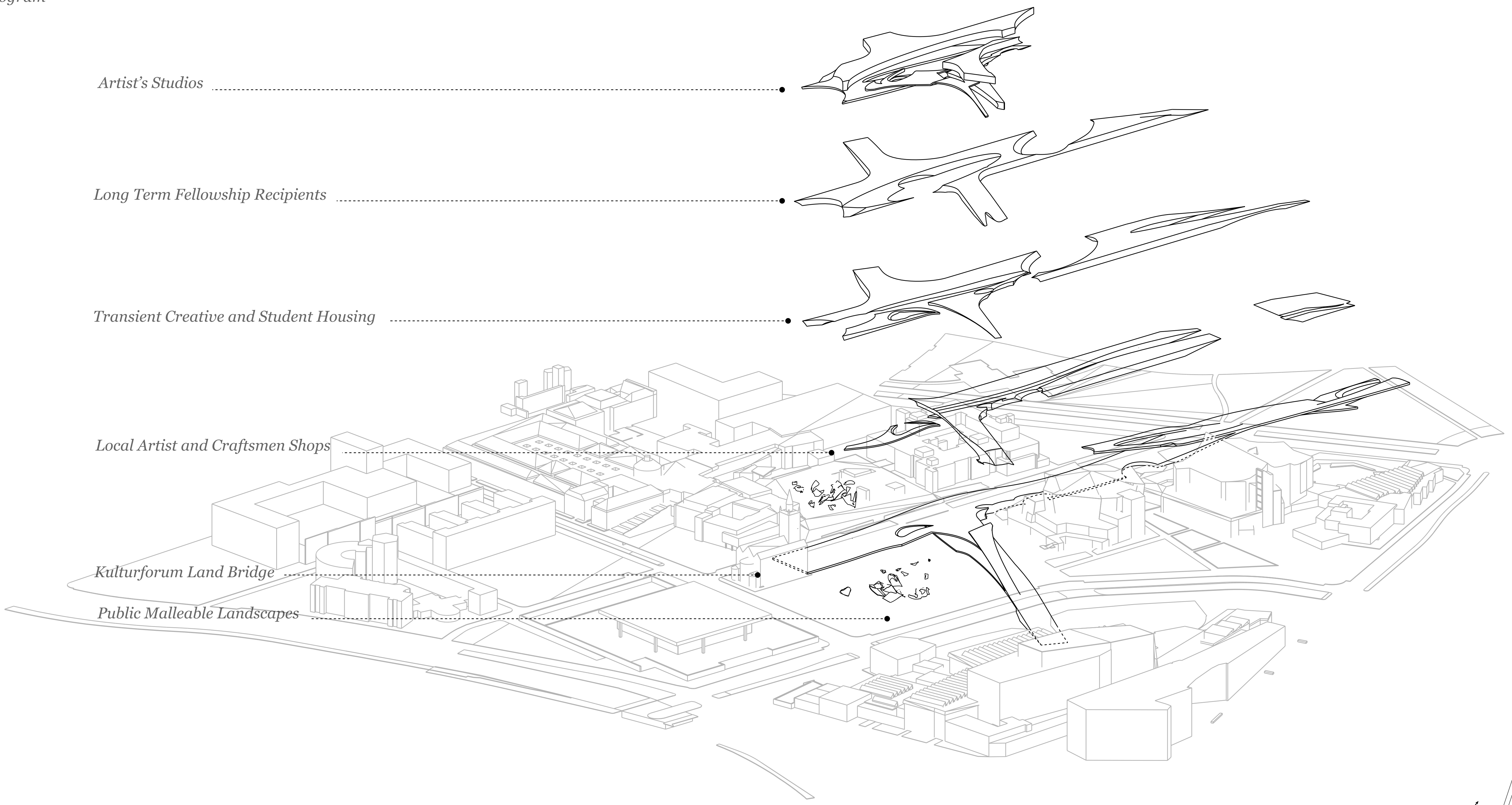
Axial Intervention



1. Current state      2. Define Axis + Filter in Tiergarten      3. Unify Axis + Bridge      4. Populate with Follies

The intent of this project is to connect the Kulturforum with Tiergarten and the Staatsbibliothek with bridges over major roadways to encourage pedestrian activity. In order to add additional value to the site, as well as further strengthen the cultural integrity of the Kulturforum, artist and student flats will make up the majority of the space programmed into the bridge. The remaining space would be set aside for artists' studios with commercial galleries and shops on the ground floor. These programs are meant to reactivate the Kulturforum by including contemporary artists in the identity that the Kulturforum provides. Public gardens would be integrated into the bridge as well, mimicking Tiergarten's wooded environment. In addition, Follies designed by artists and architects from around the world would be situated in the undeveloped landscape of the Kulturforum as well as trickle out into near by areas of Berlin in order to persuade additional visitors to enjoy a day admiring art and nature at the Kulturforum.

Bridge Program

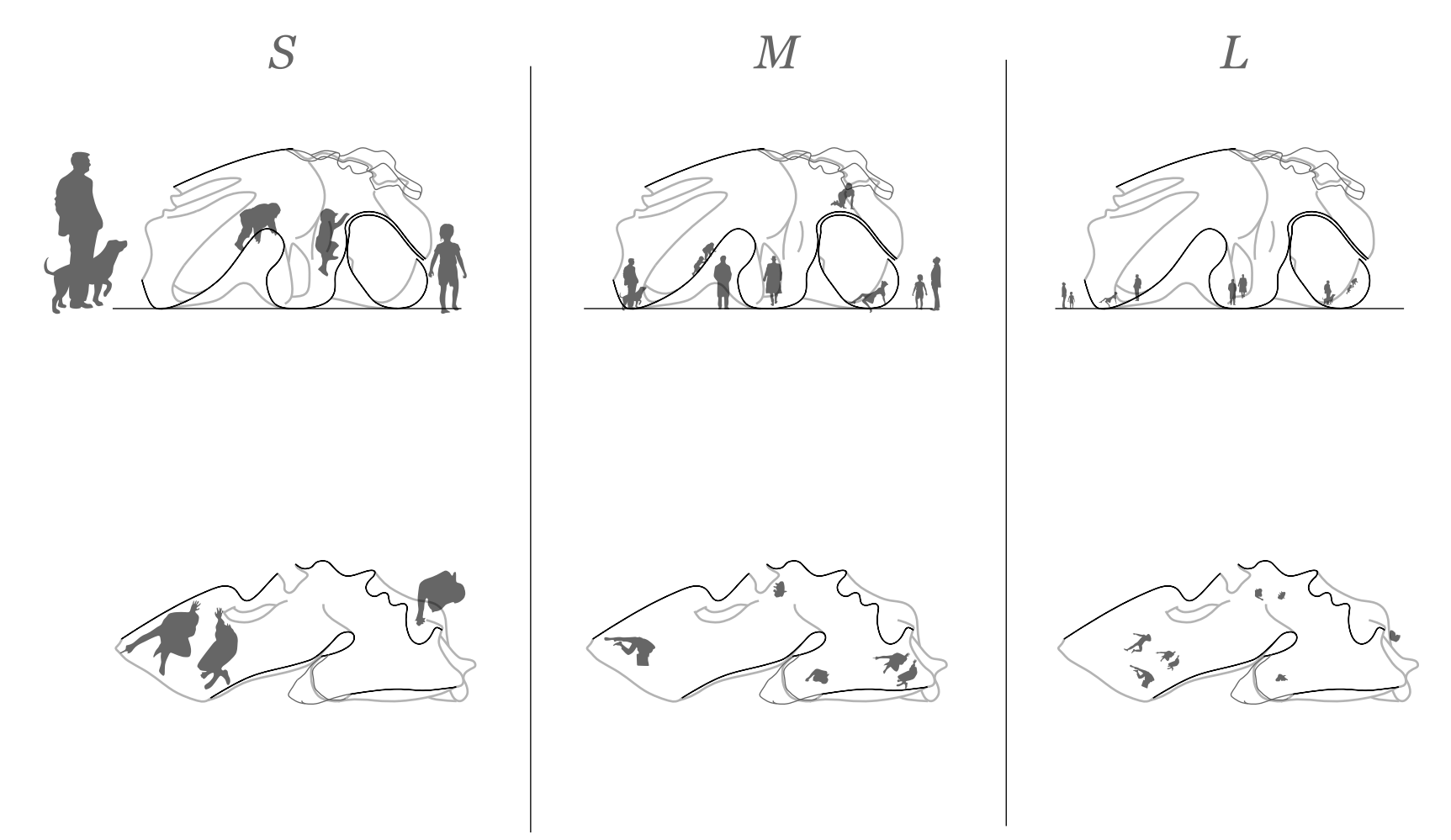


Section a 500:1m

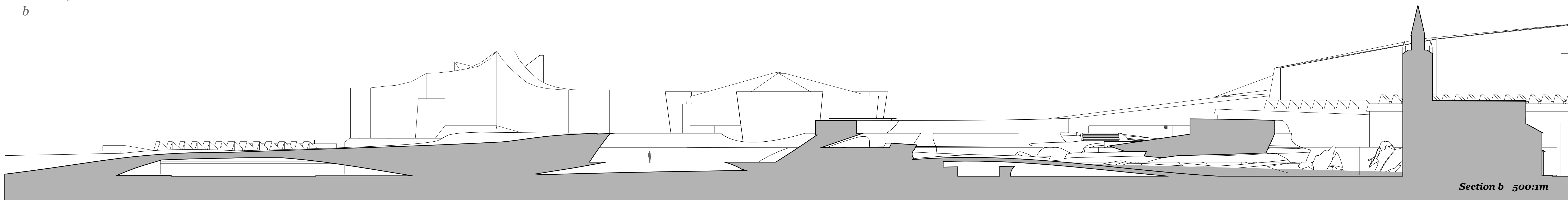


*Malleable Landscapes*

Requirements for the follies positioned in the Kulturforum include variation in scale, use, and materials. These three categories illustrate ways that these follies could be used by the public in the Kulturforum.



Master Plan 1000:1m



Section b 500:1m