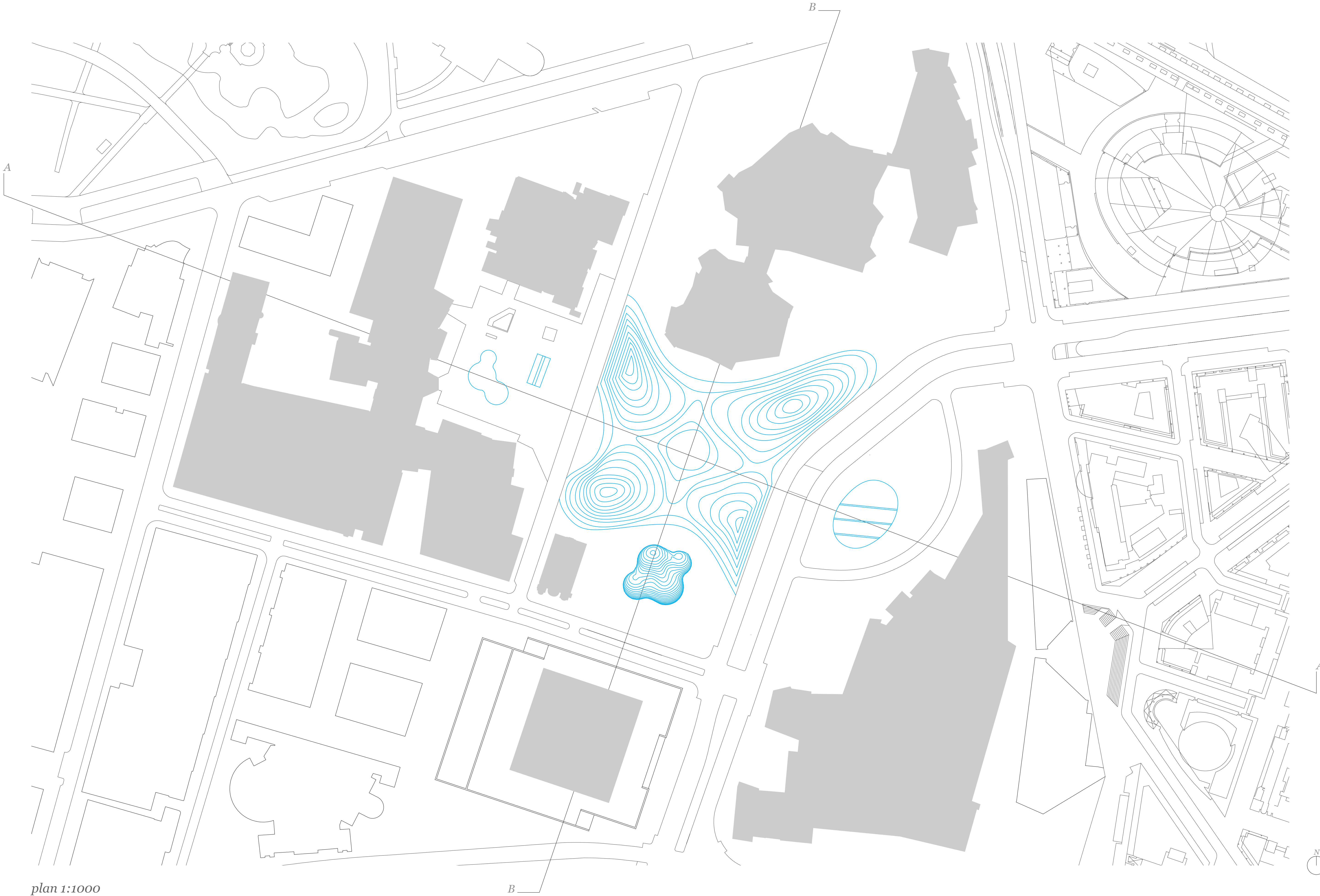
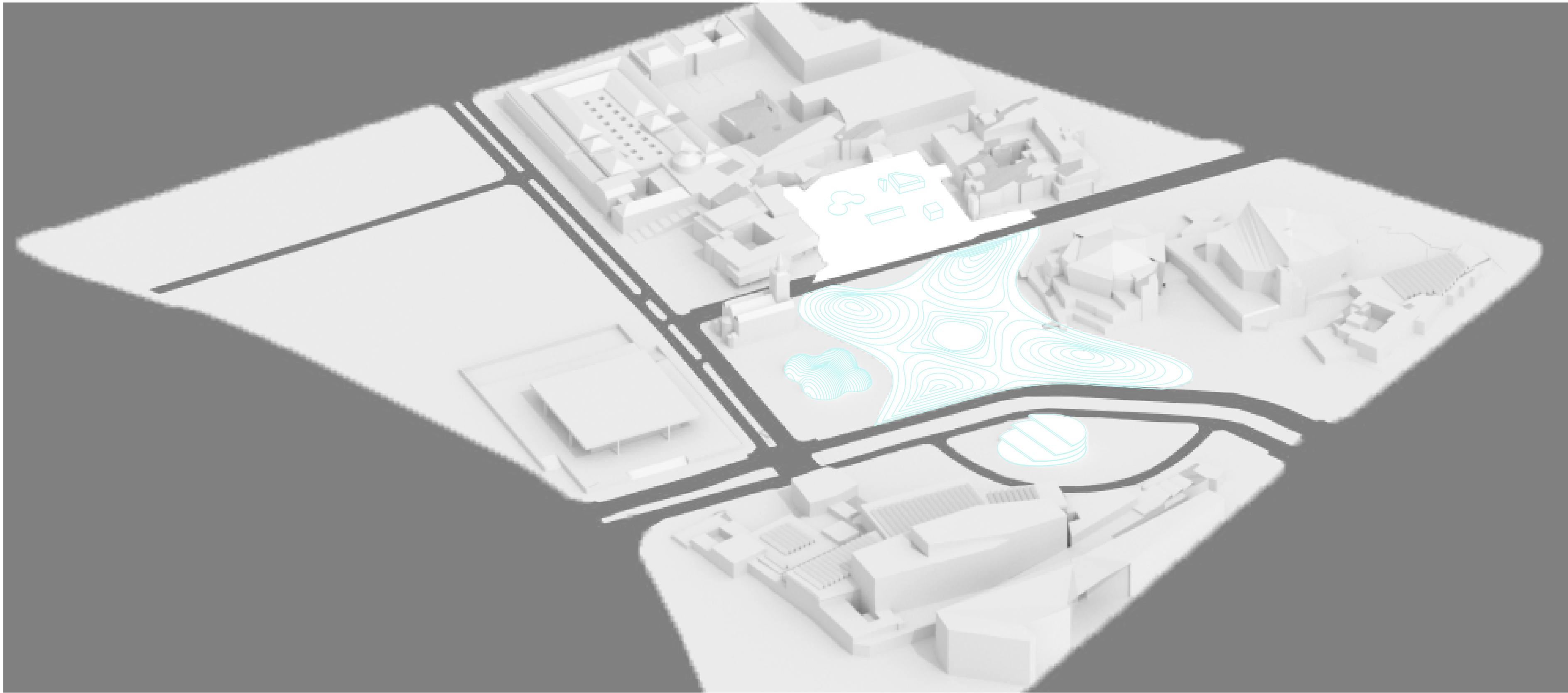
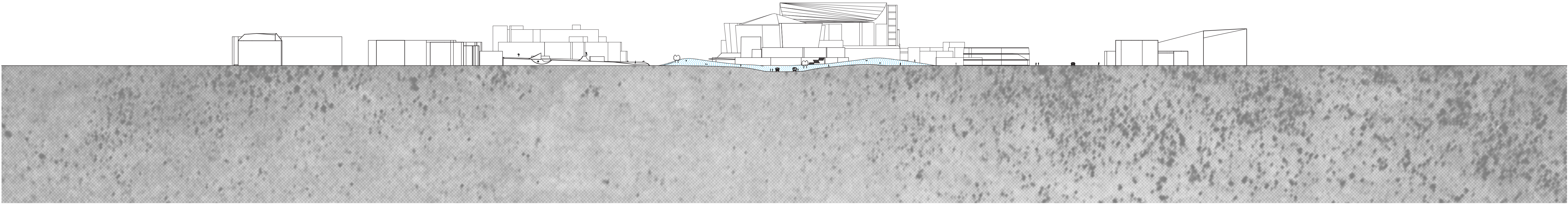
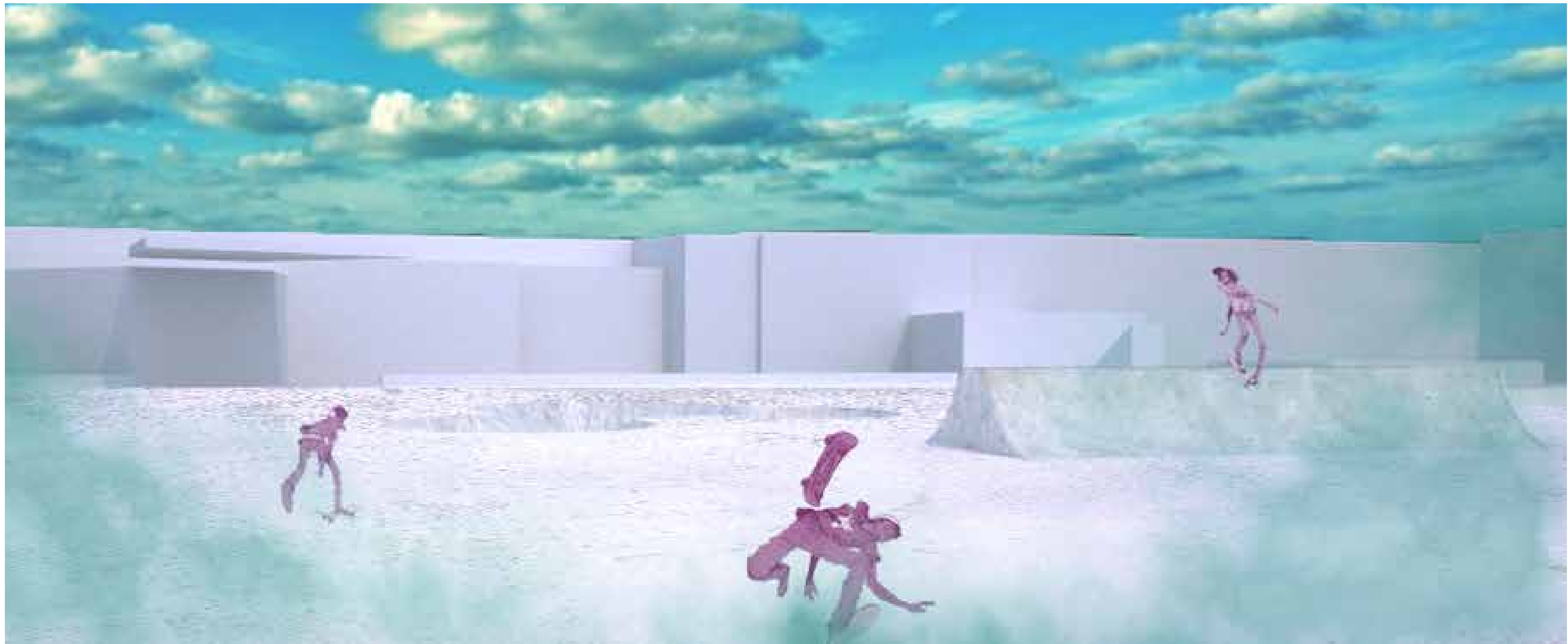
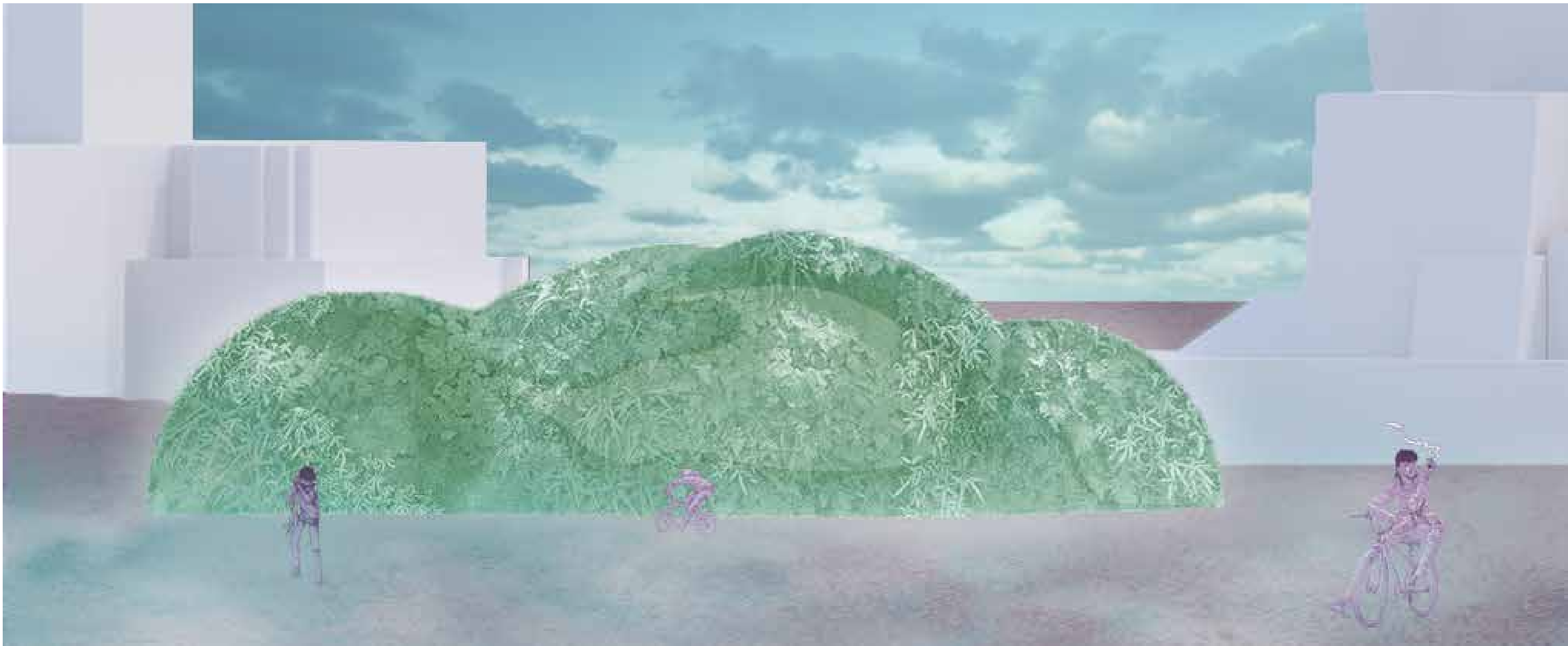


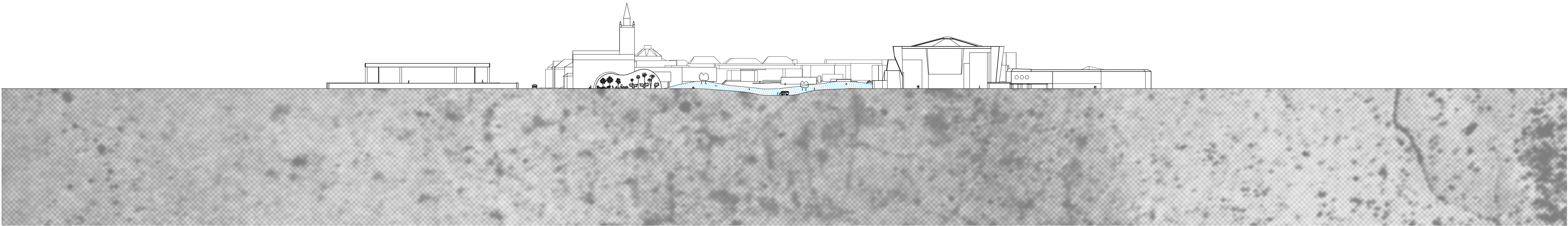
When looking at the Kultur Forum, I noticed a large scale shift between the museums and the adjacent Potsdamer Platz. To respond to this condition the site has been broken down with program. Although the pieces of program are not physically reminiscent of Potsdamer Platz, they are consistent with the overwhelming amount of program and buildings. These interventions break down the vast empty space between the existing buildings. The interventions are a direct response to the buildings using an offsetting pattern to determine their shape and/or placement. The abstract offsetting allowed for the program to take on many different shapes. This provides the interventions with the flexibilty to move around the site or change program entirely without upsetting the site. The programs I have included are a skatepark, greenhouse, food truck market, and a small residential building. The combination of play + food + housing means a variety of visitors will be attracted to the site.







section A 1:1000



section B 1:1000