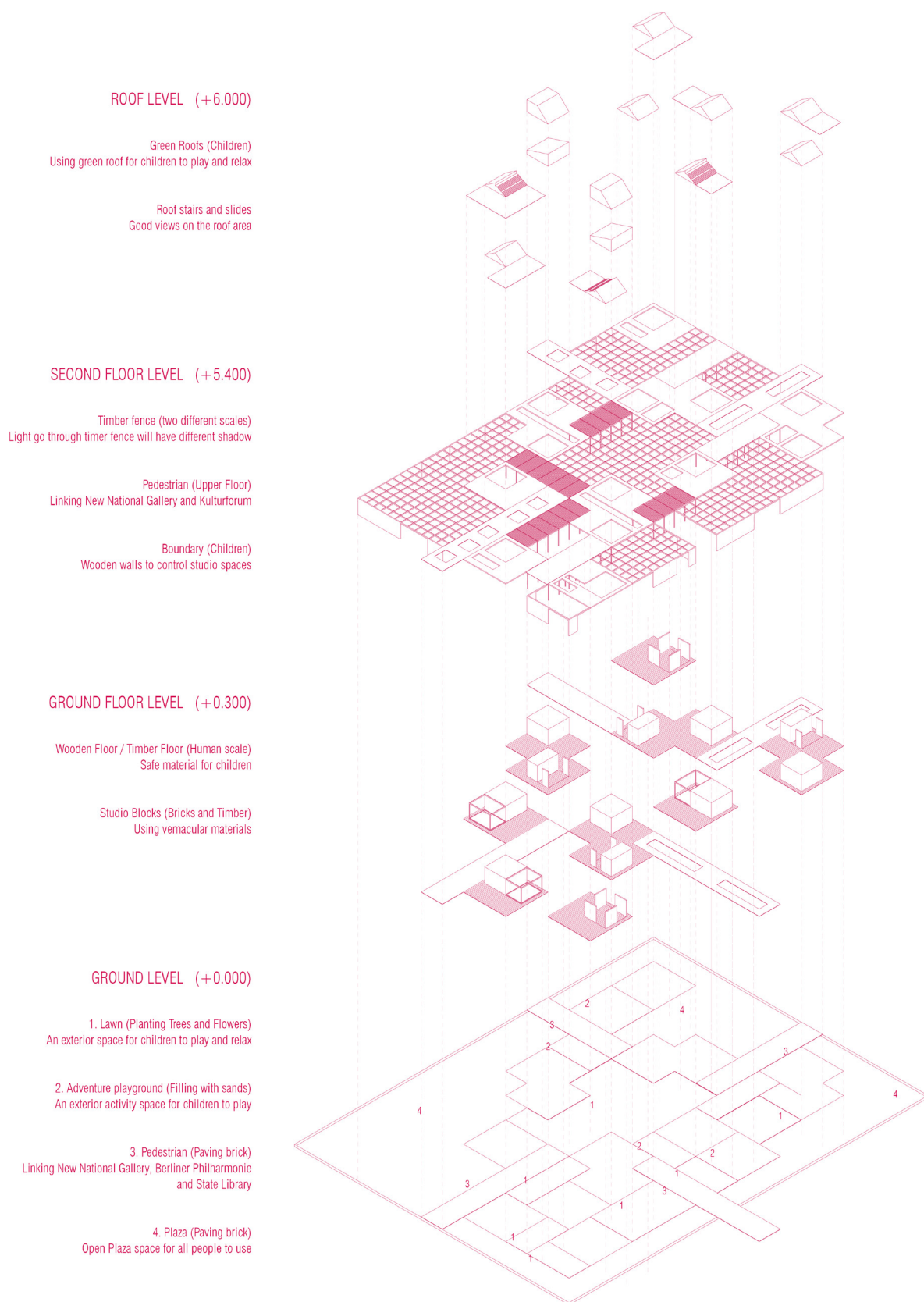


The project is about Children's Entertainment Park. Kulturforum is lacking of young people, so the project is aimed to bring more young people, especially kids to the site. As the target clients are kids, so the programme is about the "kids experience park".

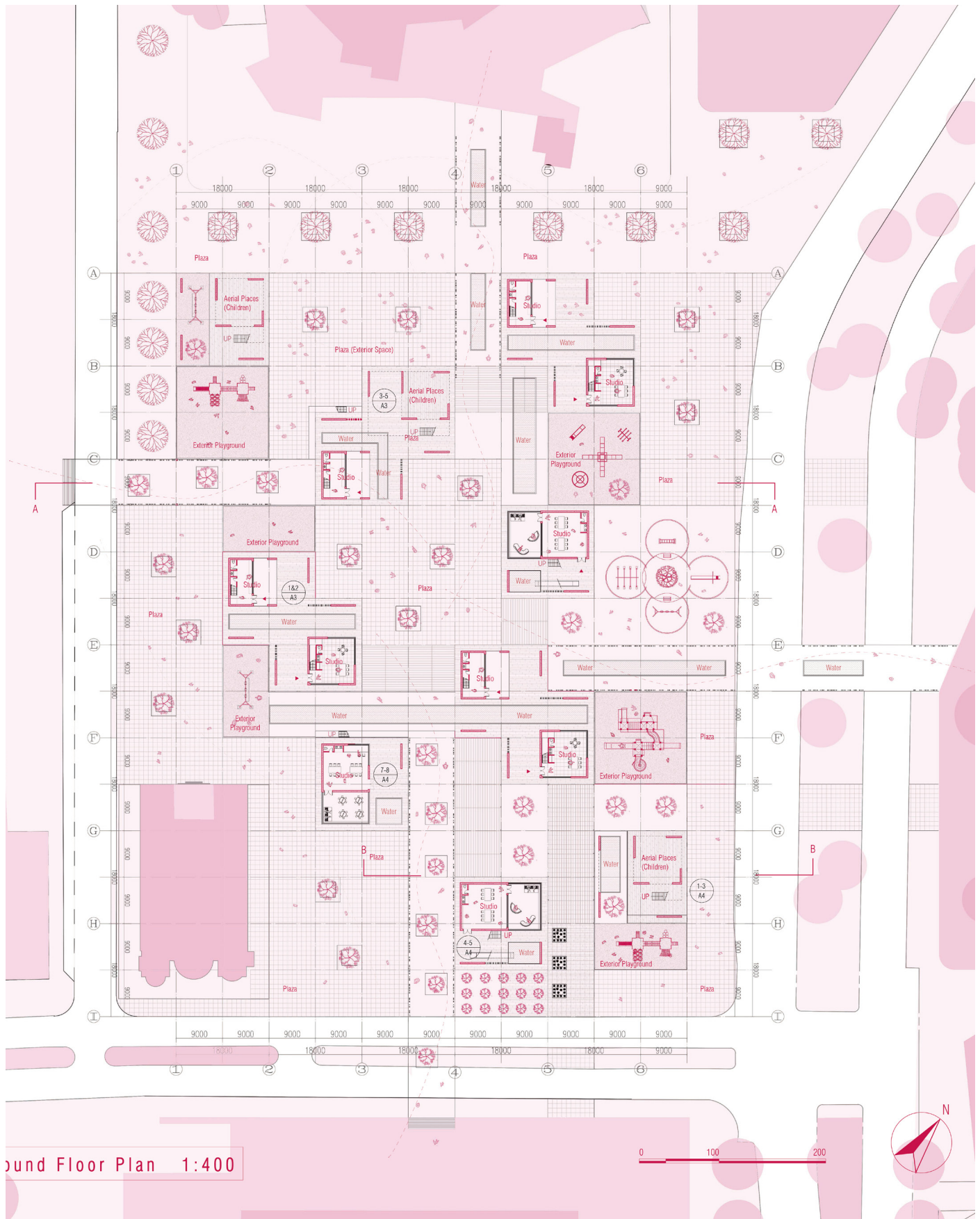
Adults will have the opportunity to bring their children into this park and "parking" their children in the site. The Park will be run by government and daycare charity.





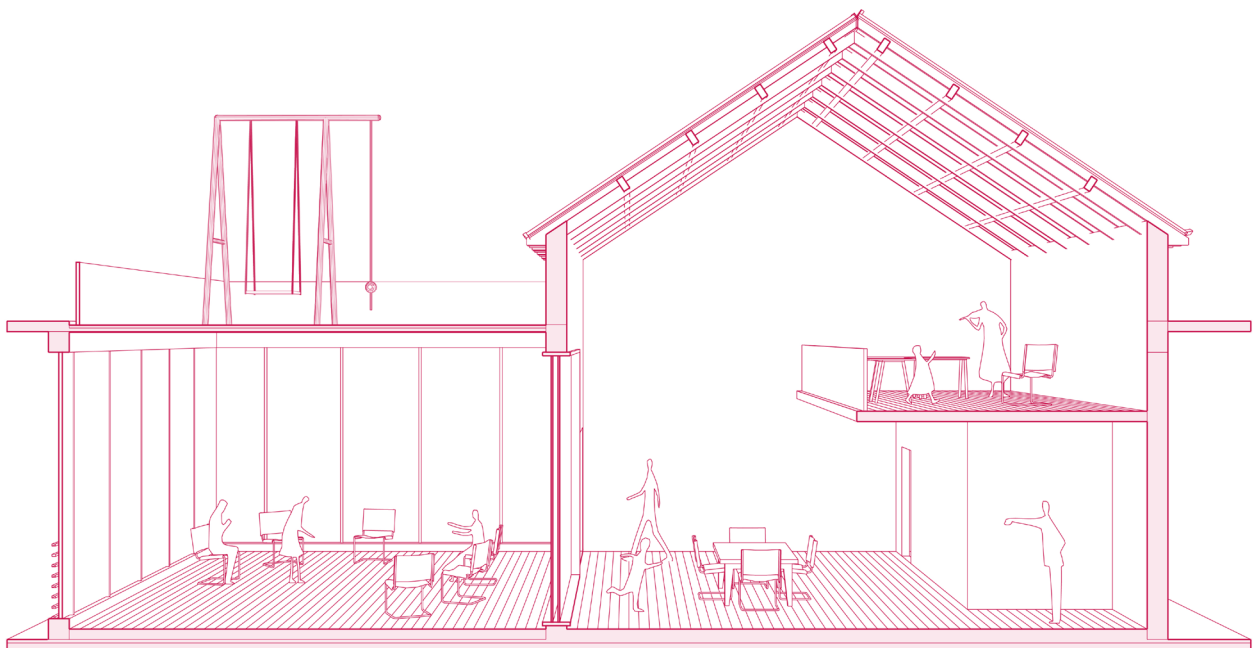
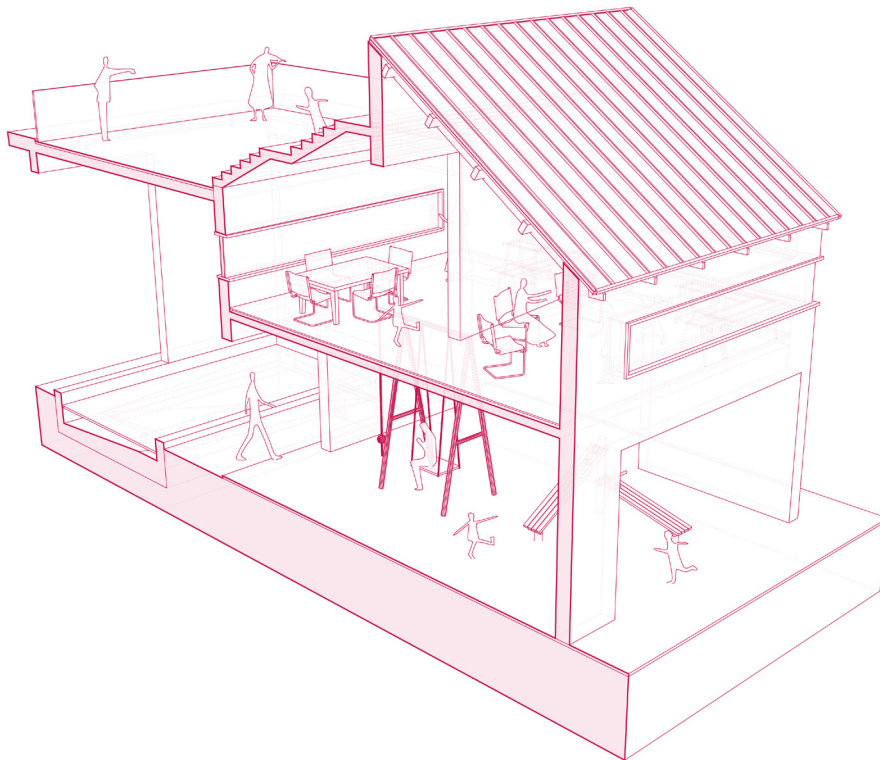
Building Form is using square blocks, which have different functions. Such as music corner, art corner, book corner, exterior playground and public open spaces. This park have its unique pedestrian as well, which connect the around building groups.

This building group has two different layers, which aimed to link around buildings both in ground level and upper level.



This is the site plan and ground floor plan, which illustrate the activity flow and the detail plan of the site. The plan will be separated and linked with four part. And each building block has its own inner space, exterior space and playground. The plan is

planned by nine meters grid.



The material of building is to use bricks, timber and glass. Comparing with surrounding building materials, which use steel and concrete, those materials are much more “warm”, give children more comfortable feelings.





I use two different section detail maps to illustrate the activity images of building group. As the target clients are kids, so the programme is about the “kids experience park”. Adults will have the opportunity to bring their children into this park and

“parking” their children in the site. The Park will be run by government and daycare charity.