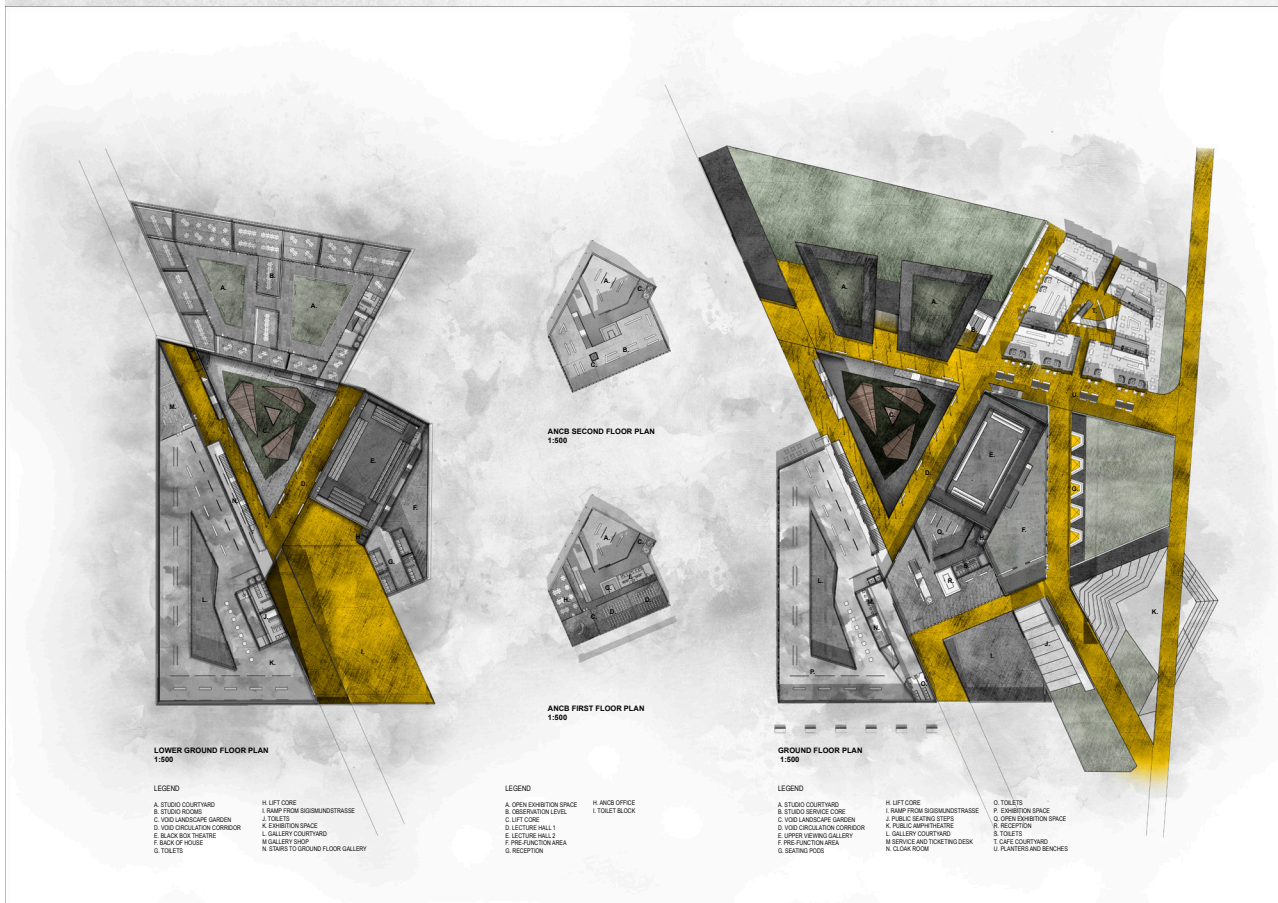
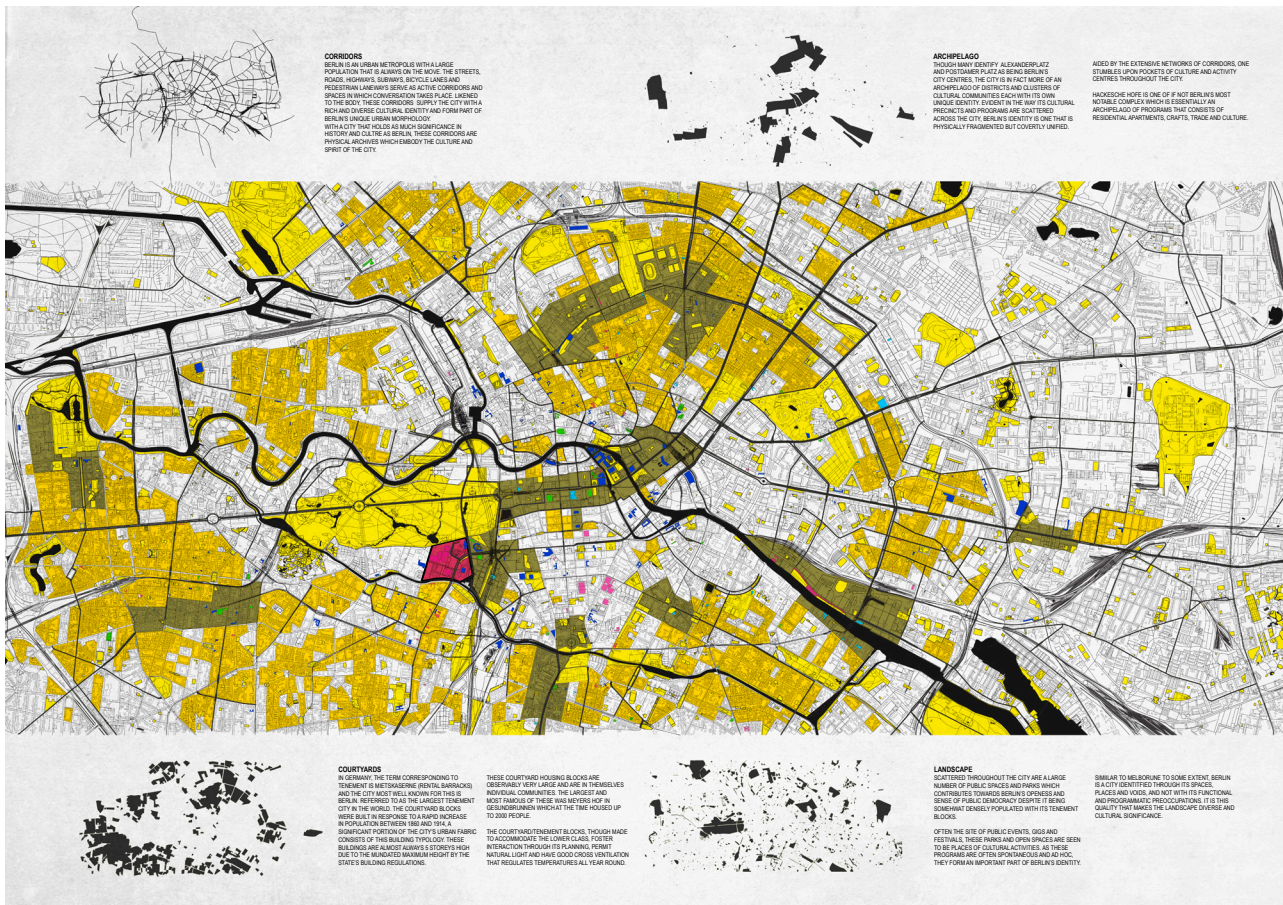


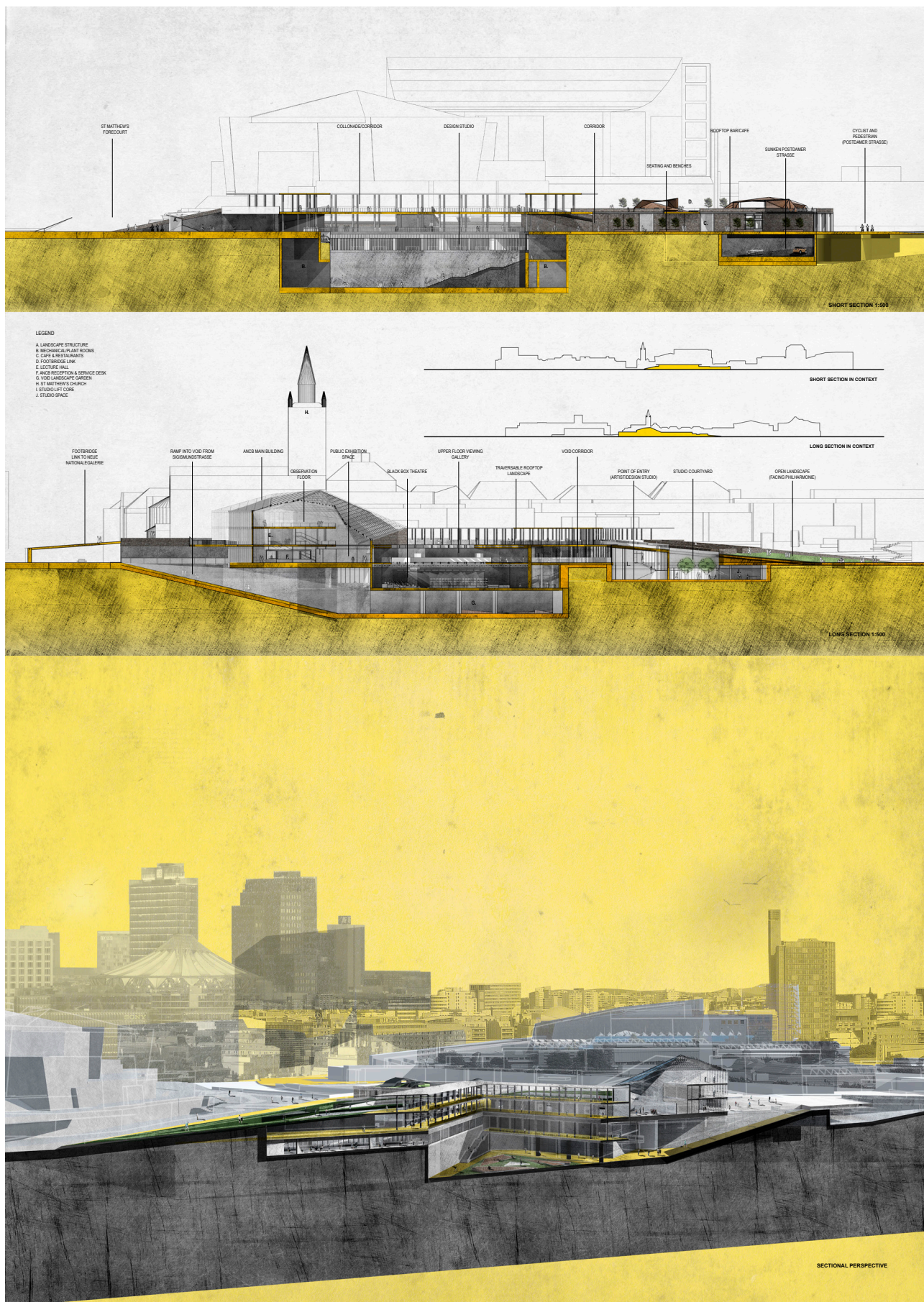
Every City has the ability to include and exclude through the way that it values and employs its own unique cultural identity through the way it values and employs its own unique cultural identity through its rich and diverse history of war, propaganda, social and political reformations. Berlin is a city that is still coming to terms with its own physical and

cultural territories and yet revelling in the uncertainty of its future. The Kulturforum, the site of focus of the studio, is a place that expresses all of these traits and qualities. In the attempt to revitalise the city's arts and cultural precinct, the design proposal seeks to live up to the essence of a culture forum by providing a landscape in which conversation takes place.



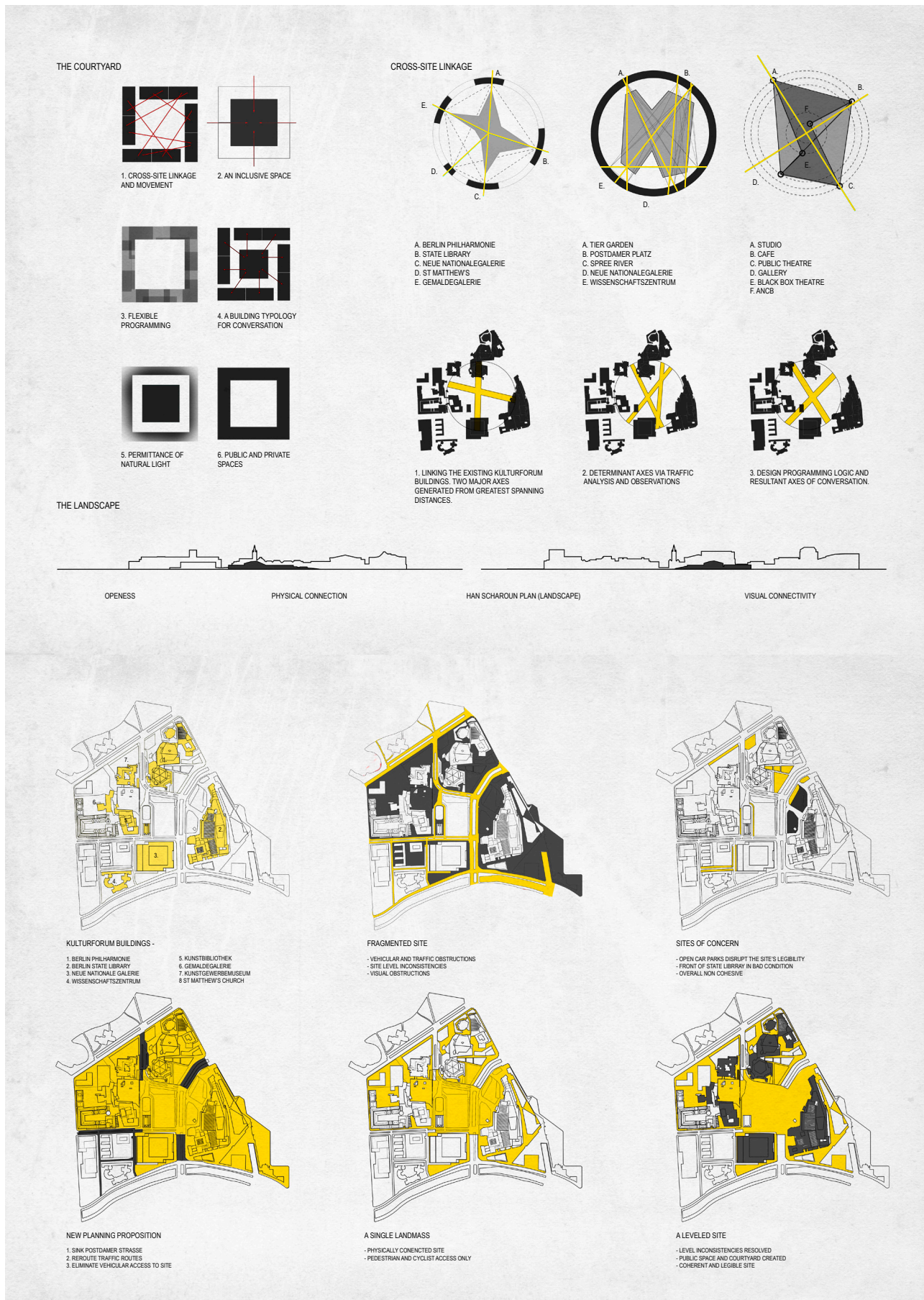
Acknowledging that we as individuals cannot possibly share the same values that may define what is inclusionary or exclusionary, it is my belief that design should see conversation as a means to bring about social and cultural exchange. In this light, conversation here can be seen as a mechanism that drives what is to be included or excluded

and thus forms the basis upon which a city is related or identified with.



The design proposal is a product of a process of critical and rigorous interrogation of urban qualities and characteristics of the city of Berlin. Based on the analysis of the city's urban fabric and plan, four design strategies (1) The Corridor, (2) The Archipelago, (3) The Courtyard and (4) The Landscape, were employed to develop an integrated landscape design which houses an international design and architectural

forum (ANCB). Laneways and streets which cut through the building serve as conversational corridors much like the colonnades of the Agora were intended for. As a result, the building's core programs and spaces are fragmented into an archipelago of activities much like the way Berlin's cultural districts are scattered throughout the city.



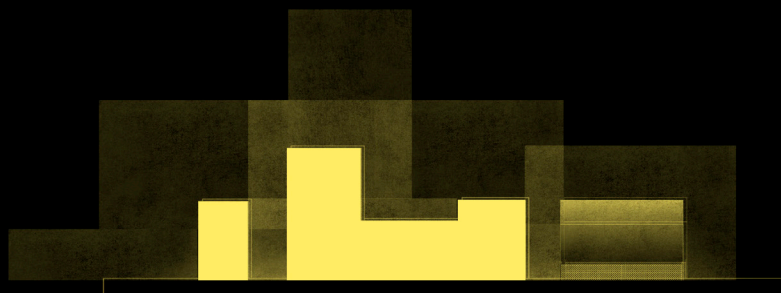
The courtyard typology takes its form from the tenement housing block in which most of Berlin is made up of. Finally, the Landscape, which seeks to subdue the presence of an architectural intervention, serves as both a public space and recognises the importance of a landscape that Hans Scharoun had employed but hasn't fulfilled in his

masterplan of conversation to occur. One that is neither a field nor a building, one that represents the city's populace in conversation.

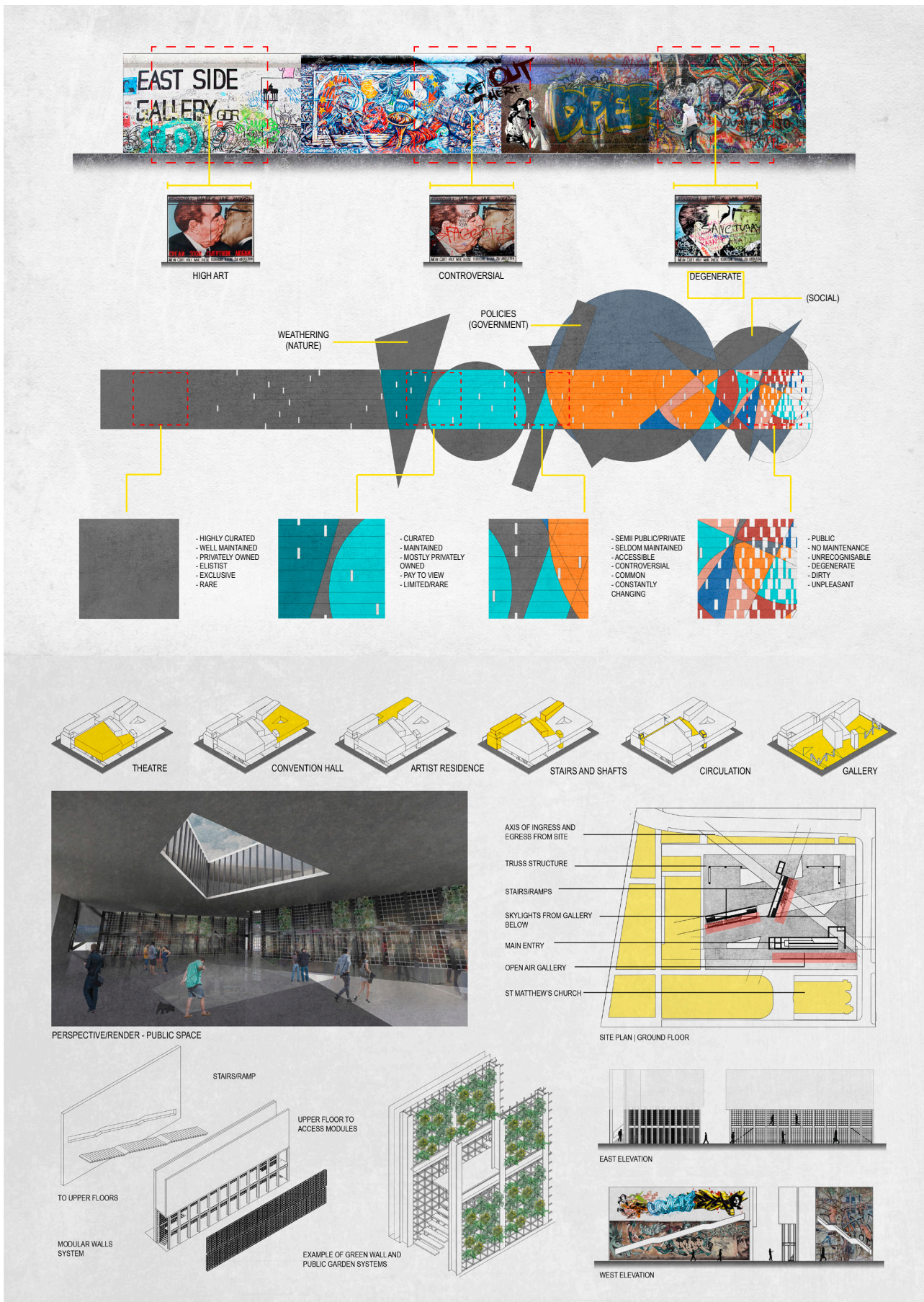
- A conversation is a dialogue, not a monologue. That's why there are so few good conversations: due to scarcity, two intelligent talkers seldom meet. -



DUALSIM II - PLACE | SPACE | VOID



DUALSIM I - PLACE | SPACE | VOID



The East Side Gallery is a 1.3KM stretch of the remains of the Berlin Wall and is now commemorated as a memorial of freedom. The wall consists of over 105 paintings and art pieces from both local and international artists. Today it is considered to be the largest and longest-lasting open air gallery in the world which documents and expresses euphoria and freedom. Since 1989, a number of restoration projects have been undertaken to restore many of the significant murals which have since been vandalised. The gallery has

been protected by the artists and individual sponsors/supporters. The fine line between what is public and private is what interests me and eventually led me to the development of my concept - Conversation. The gallery is neither overtly controlled and dictated such as a government building nor is it totally disregarded. The provokes conversation which is key to creating culture and the development of an integrated city.

